

SVG30/SVG83 (Twin Track) Product Manual

Contents:

SECTION A:

Typical Sections

SECTION B:

Hardware Options

SECTION C:

Pocket Slider Typical Sections

SECTION D:

Coupling Details

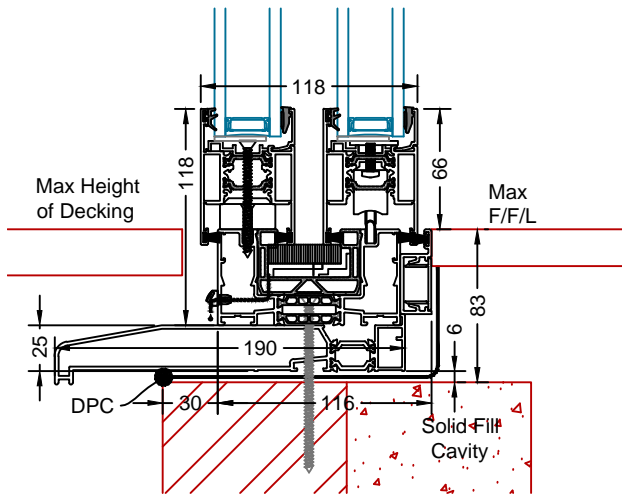
SECTION E:

Statics

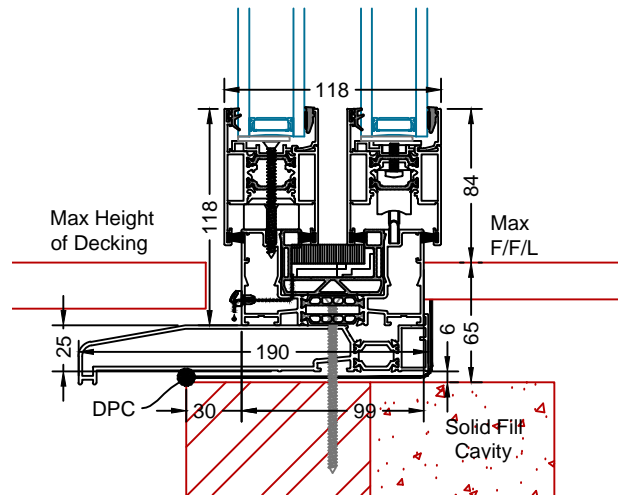
SVG30/SVG83 (Twin Track)

TYPICAL SECTIONS

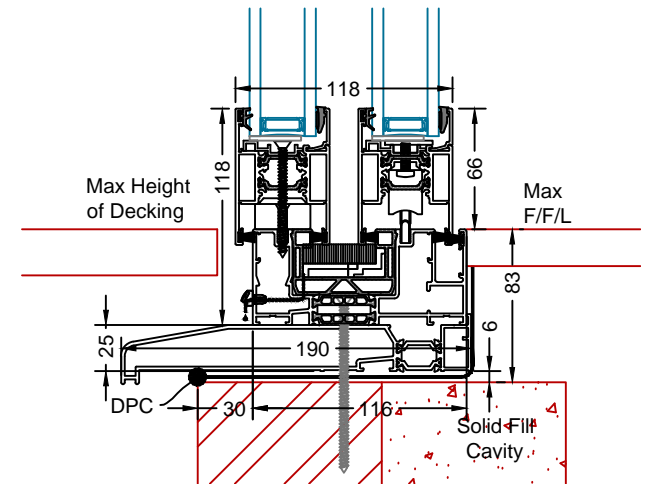
Twin Track on a Sill
With Internal
Flush Floor Detail



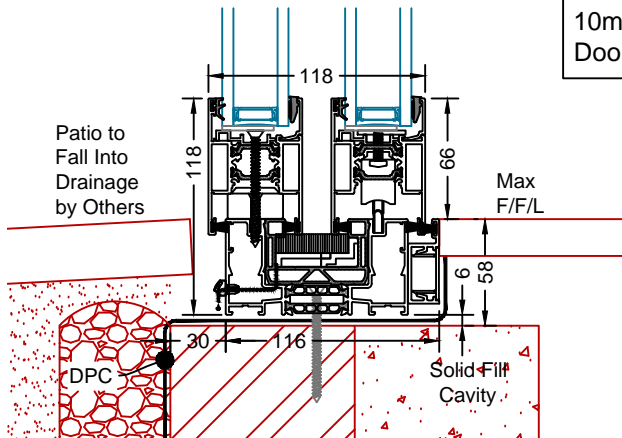
Twin Track on a Sill
With Non-Flush
Internal Floor Detail



Twin Track 190mm Sill
With Flush Internal Profile All Round

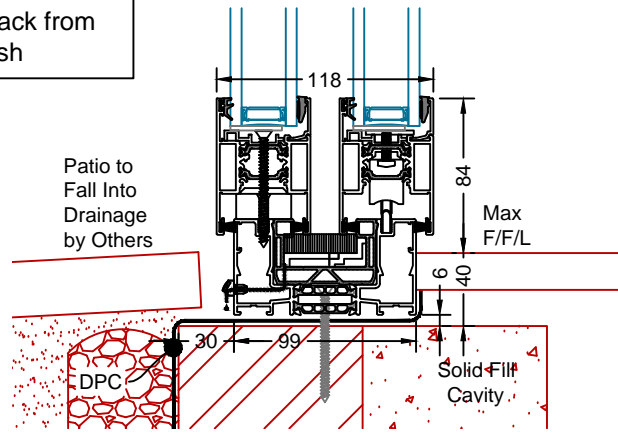


Twin Track
With Internal
Flush Floor Detail

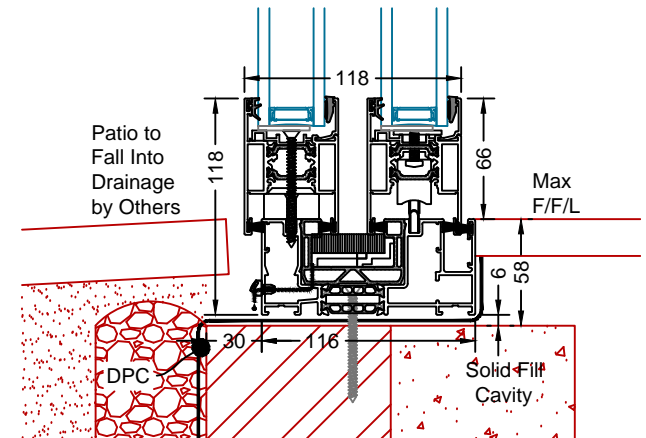


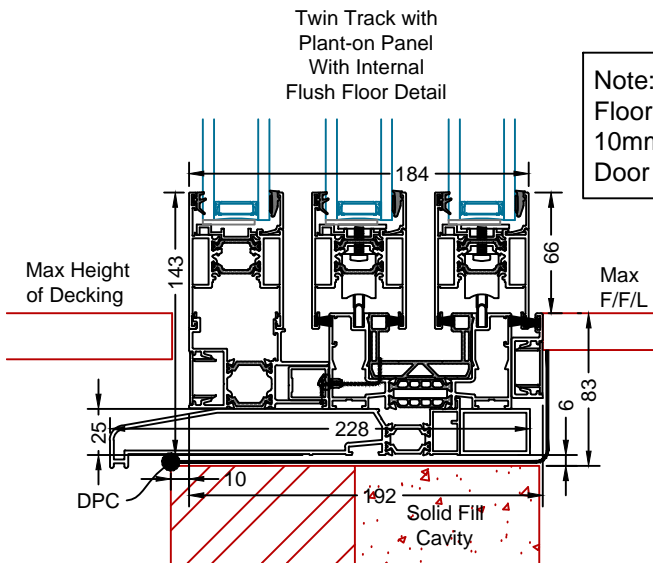
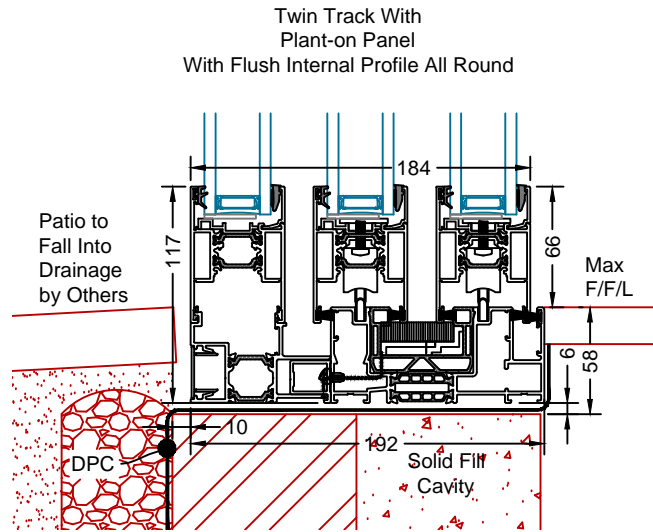
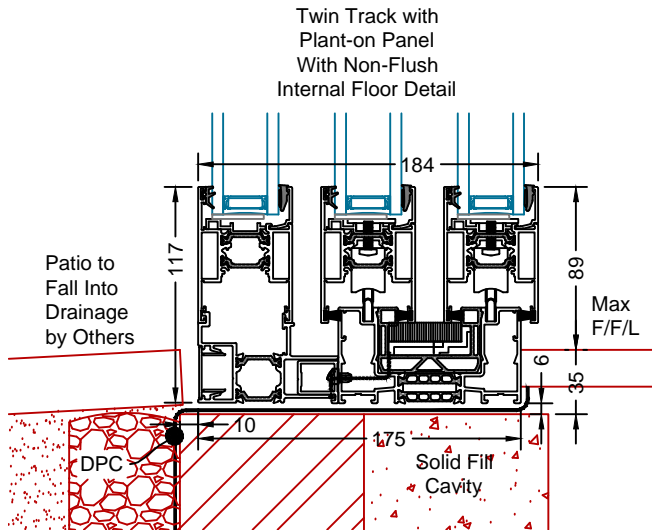
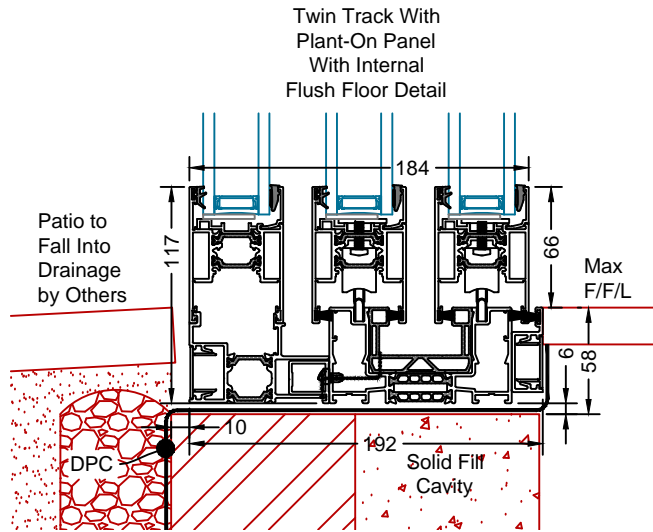
Note: All External
Floor Finishes to be
10mm Back from
Door Sash

Twin Track
With Non-Flush
Internal Floor Detail

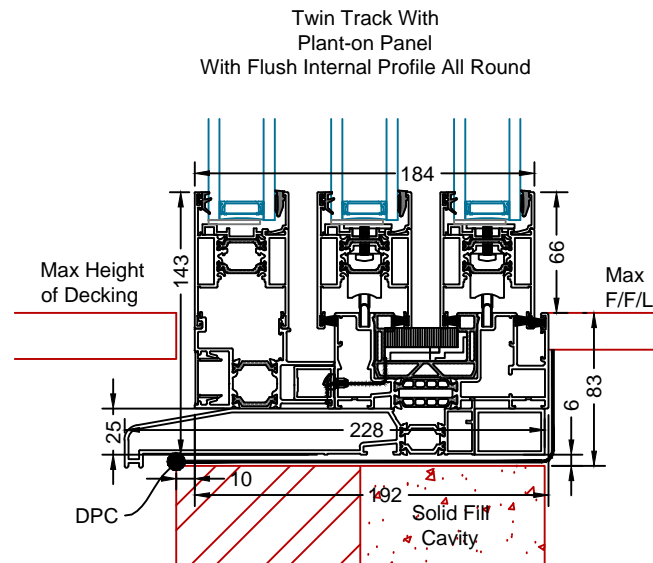
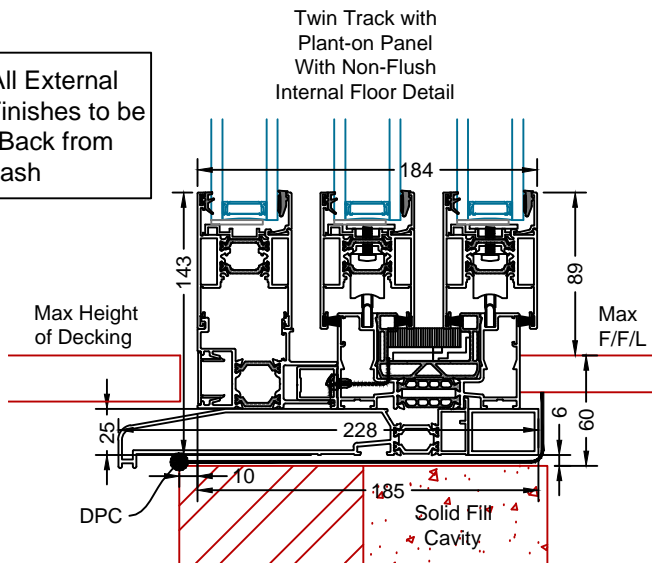


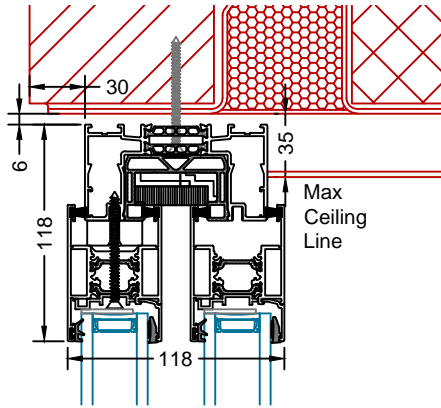
Twin Track
With Flush Internal Profile All Round



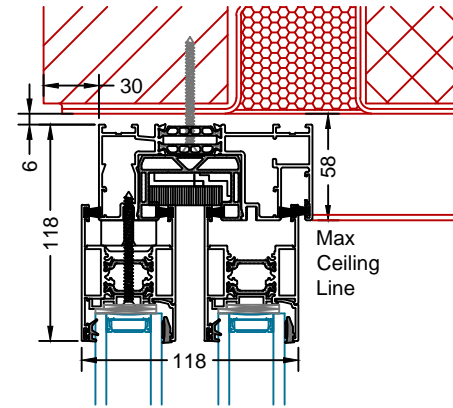


Note: All External Floor Finishes to be 10mm Back from Door Sash

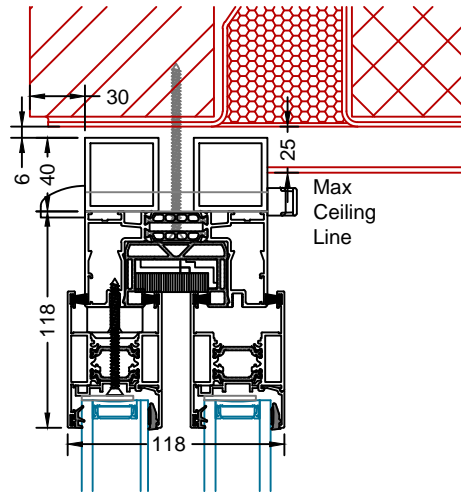




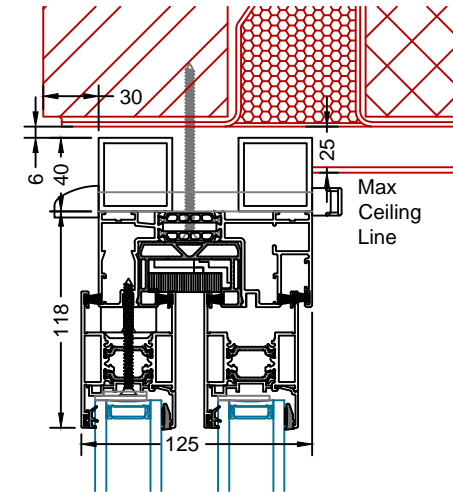
Twin Track



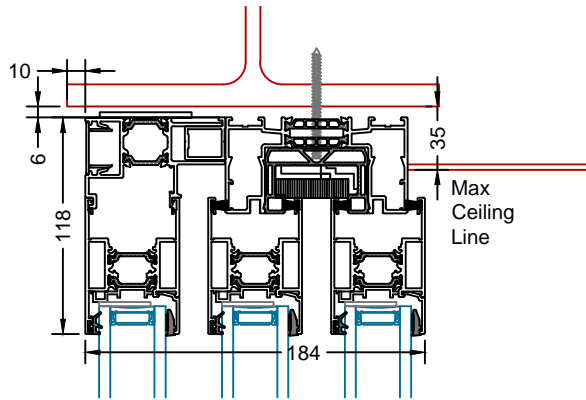
Twin Track
With Flush Internal Profile All Round



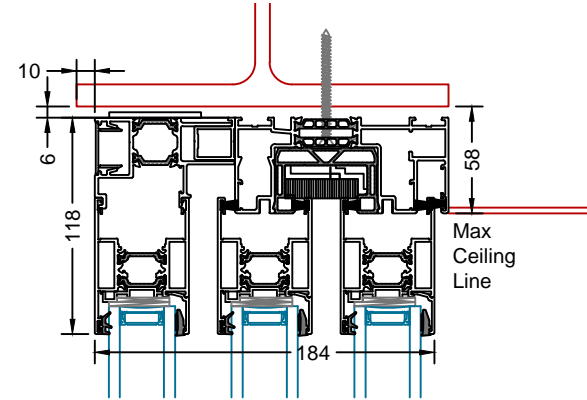
Twin Track
With Trickle Vent



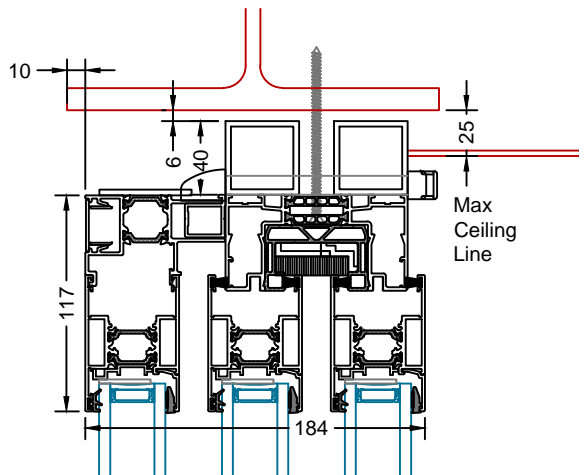
Twin Track
With Flush Internal Profile All Round
And Trickle Vent



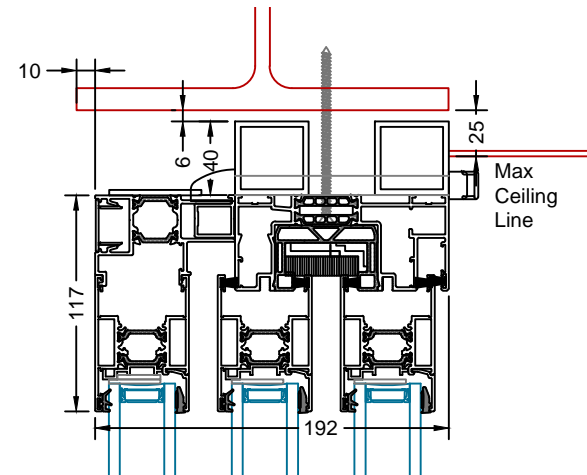
Twin Track with
Plant-on Panel



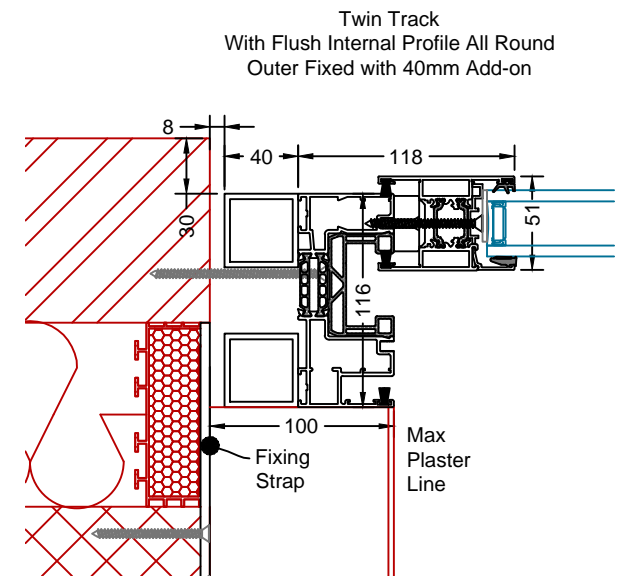
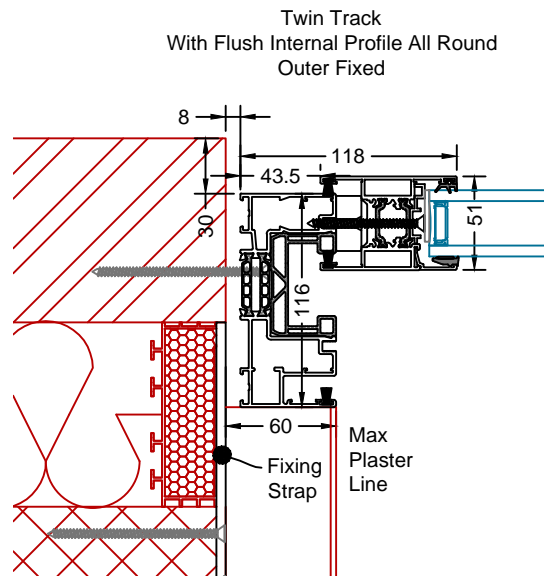
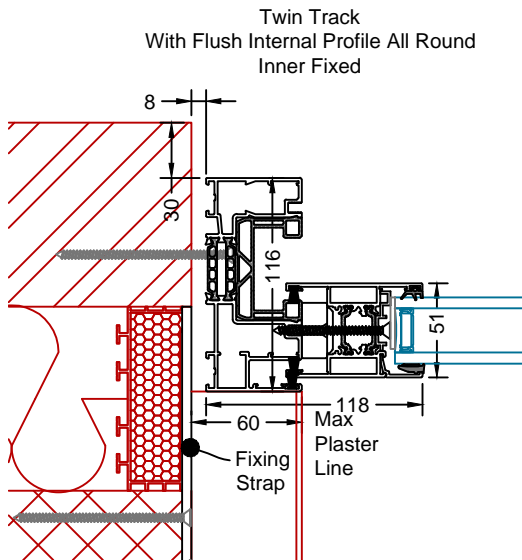
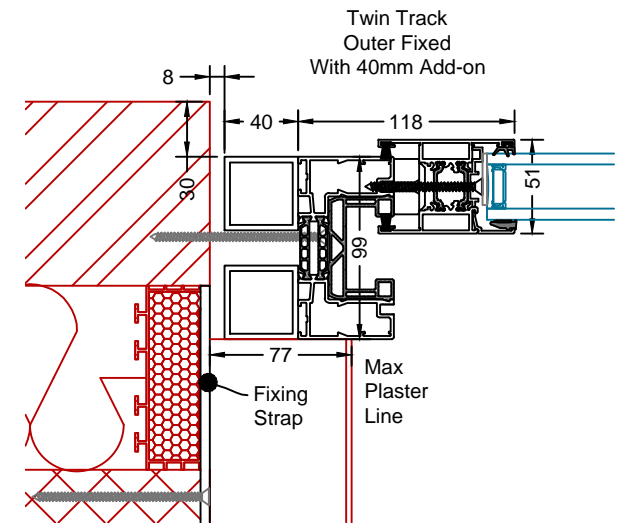
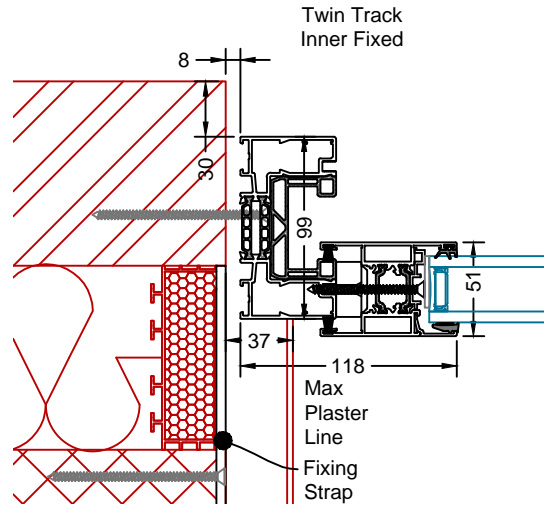
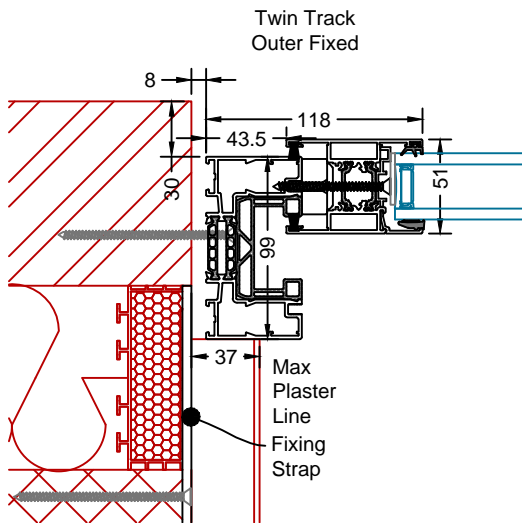
Twin Track And Plant-on Panel
With Flush Internal Profile All Round



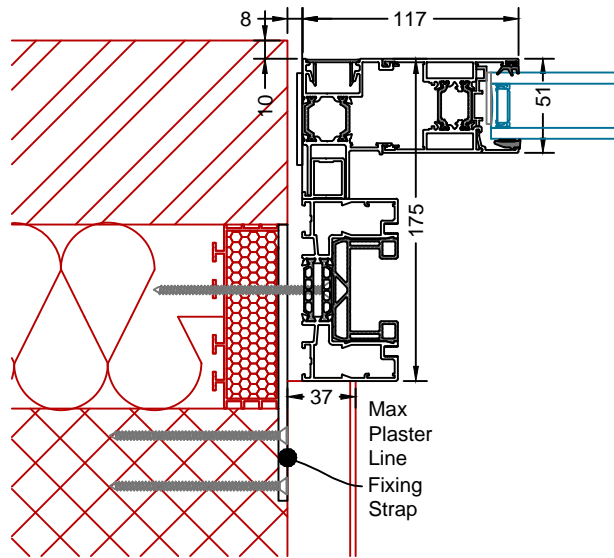
Twin Track And Plant-on Panel
With Trickle Vent



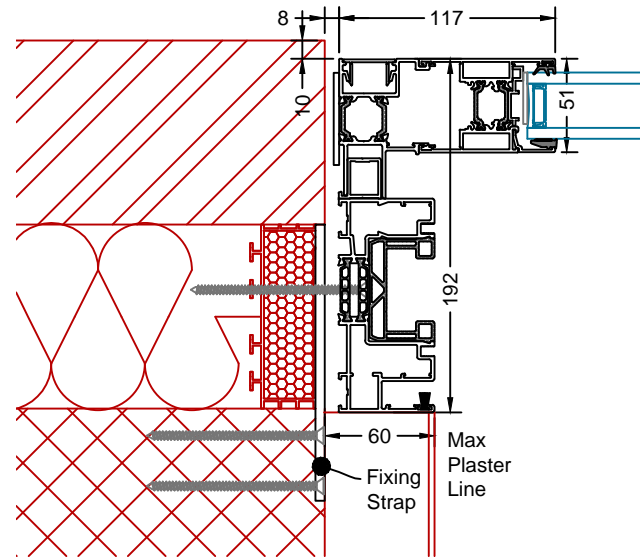
Twin Track And Plant-on Panel
With Flush Internal Profile All Round
And Trickle Vent



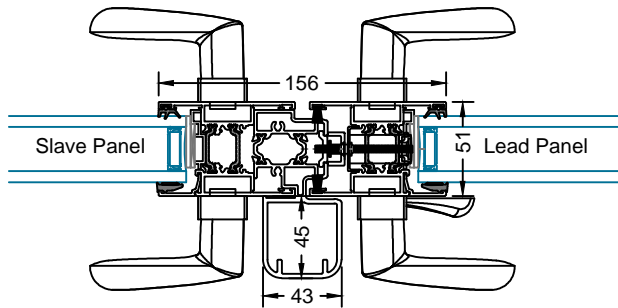
Twin Track with
Plant-on Panel



Twin Track And Plant-on Panel
With Flush Internal Profile All Round

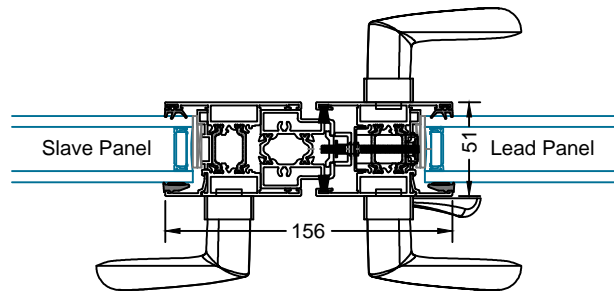


Centre Meeting
Closing Rebate
Reinforcement Profile
(‘D’ Shaped Handle Only)

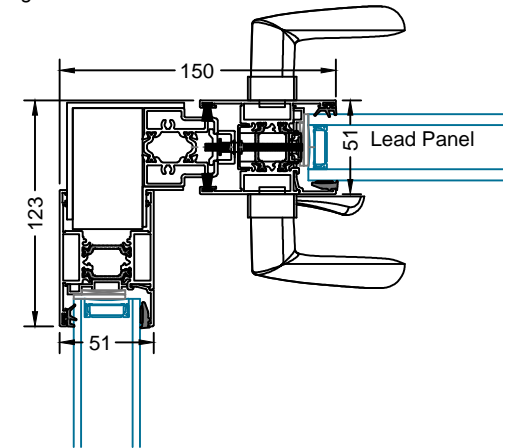


May Be Required In
Exposed Locations

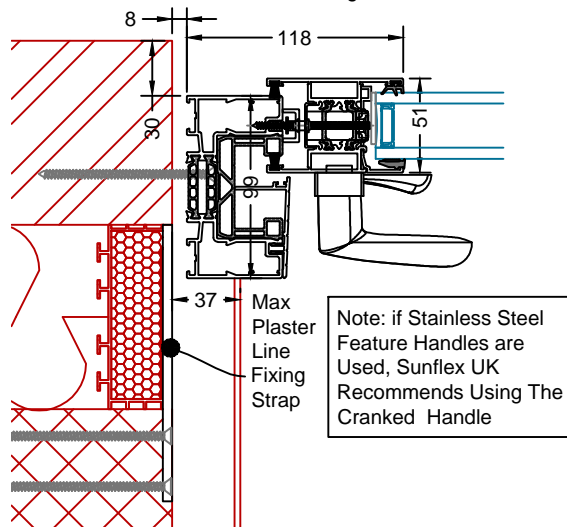
Centre Meeting
Closing Rebate



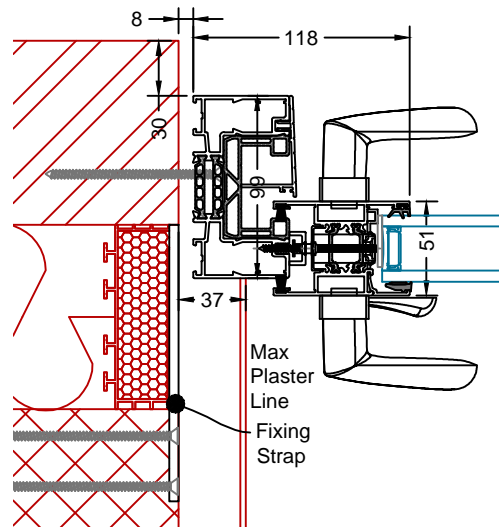
Centre Meeting
Closing Rebate 90°



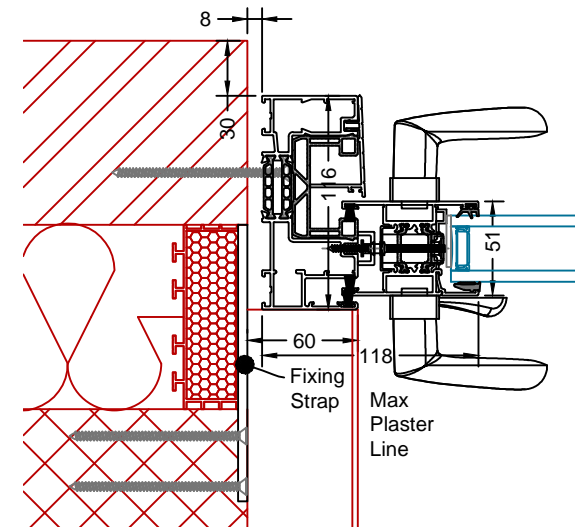
Twin Track
Outer Sliding



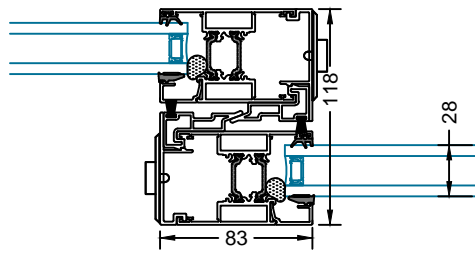
Twin Track
Inner Sliding



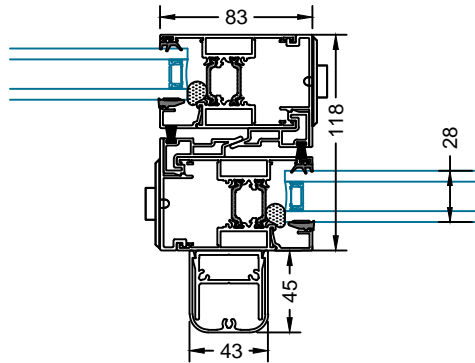
Twin Track
With Flush Internal Profile All Round
Inner Sliding



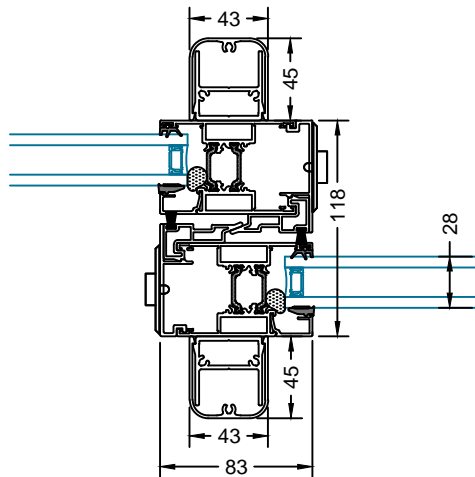
For Profile Limitations,
See Section E



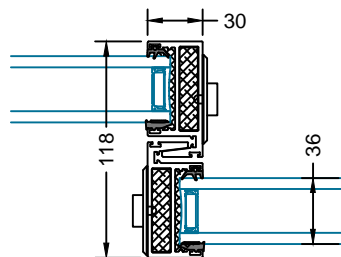
Standard Mullion



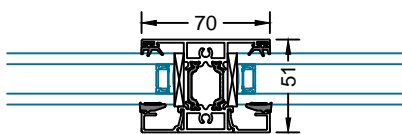
Standard Mullion
with Internal Reinforcement



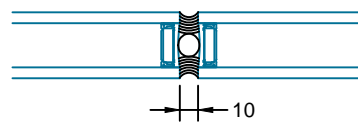
Standard Mullion
with Internal and External
Reinforcement



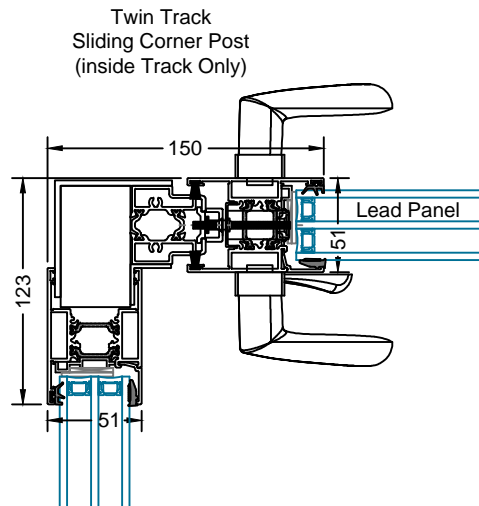
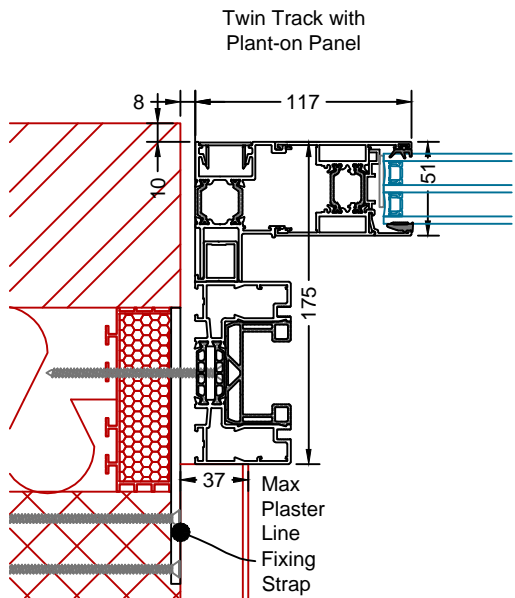
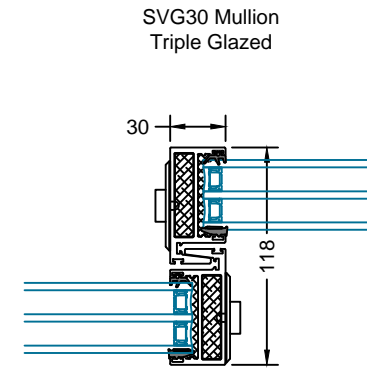
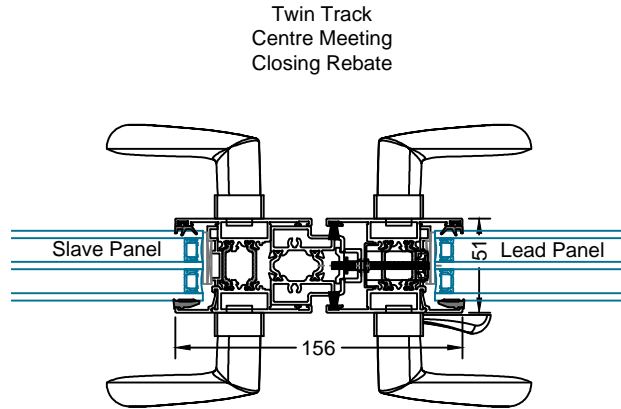
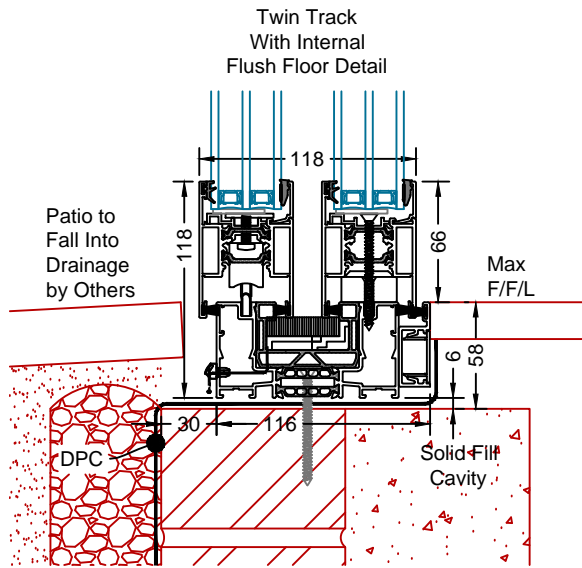
SVG30 Mullion



Door Sash
Mullion / Transom
(NOT AVAILABLE ON SVG30 Option)

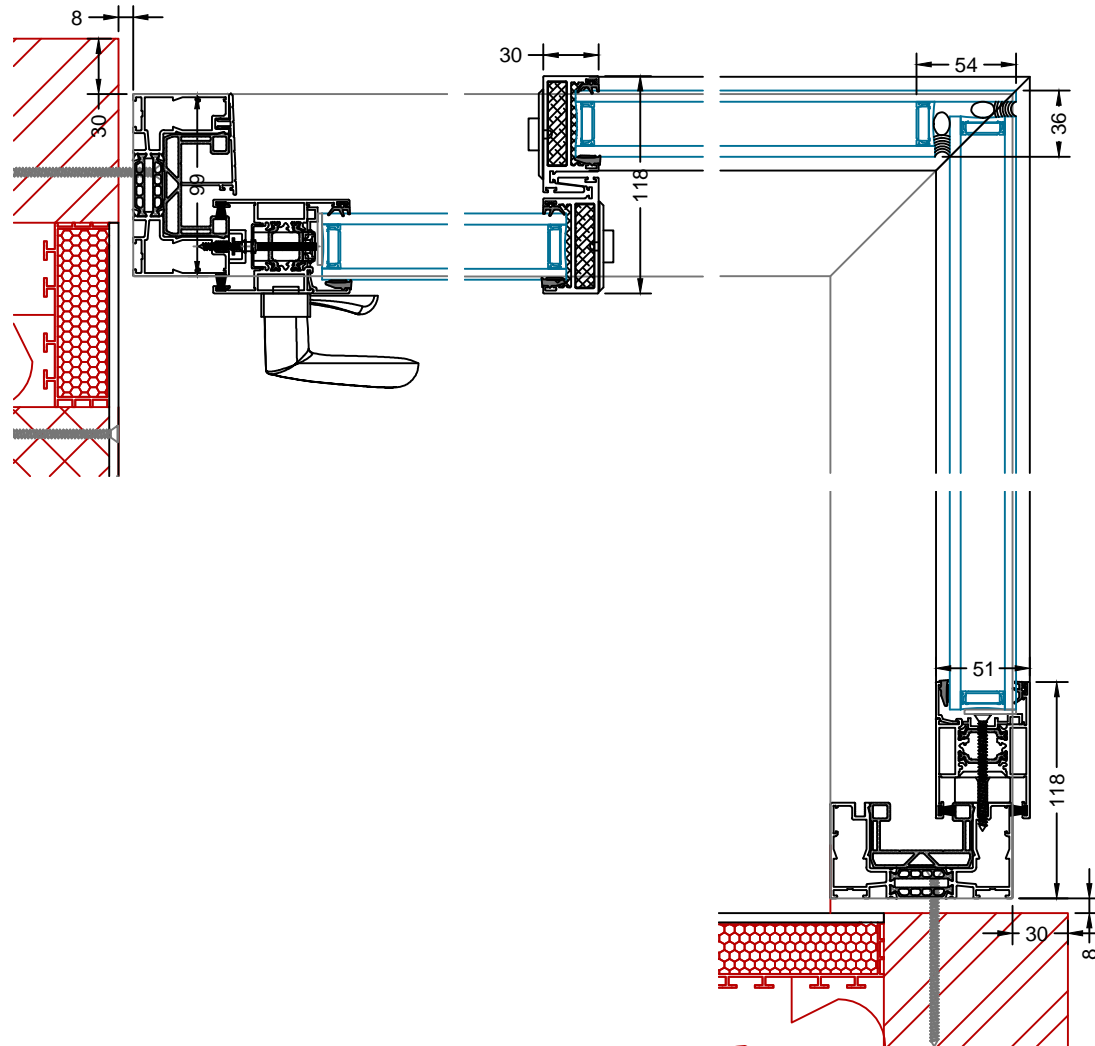


In-Line Glass to Glass Joint

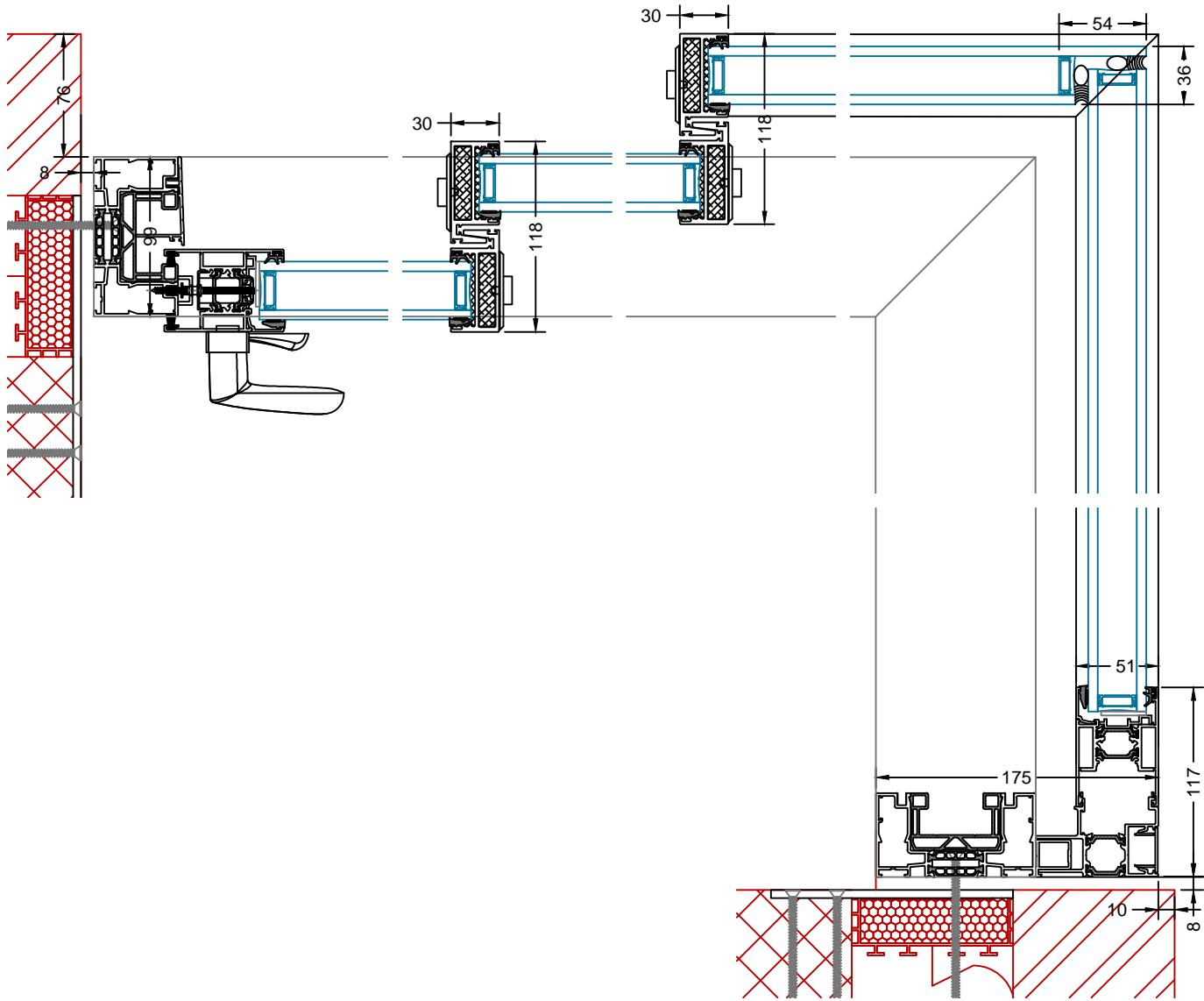


Note: All Previous Details are Available in 38mm Triple Glazed

Glass to Glass
Corner



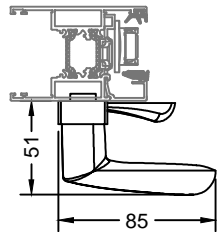
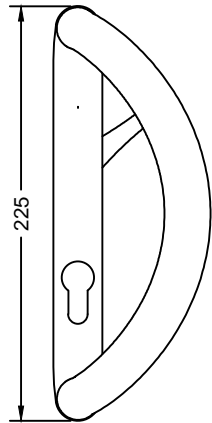
Glass to Glass
Corner with Plant-on



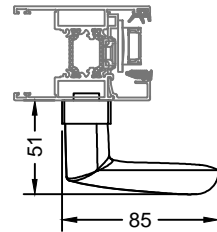
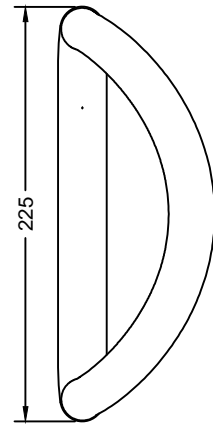
SVG30/SVG83 (Twin Track)

HARDWARE OPTIONS

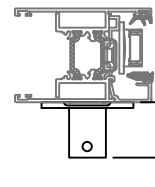
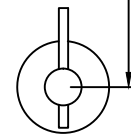
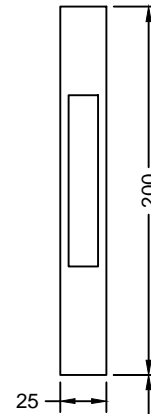
'D' Shaped Handle
With Keylock



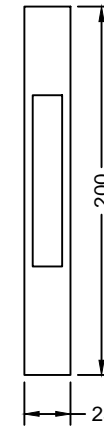
'D' Shaped Handle
Without Keylock



Recessed Handle
Lead Panel

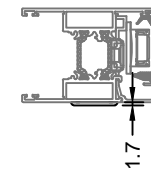


Recessed Handle
Slave Panel

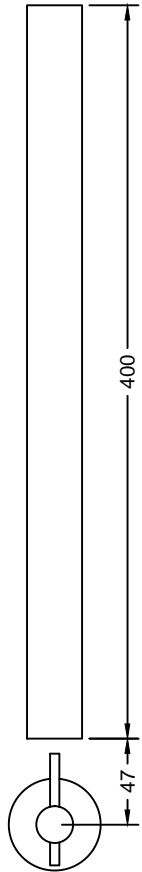


Snib Turn
(stainless Steel Finish Only)

Escutcheon
(stainless Steel Finish Only)



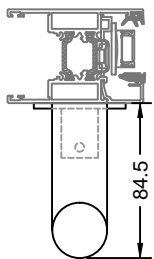
Straight Handle
With Keylock



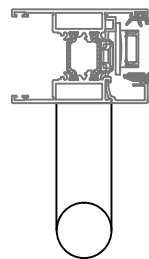
Snib Turn
(stainless Steel Finish Only)



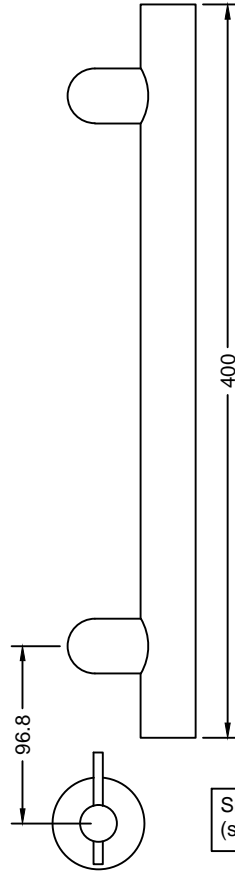
Escutcheon
(stainless Steel Finish Only)



Straight Handle
Without Keylock



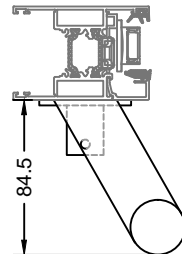
Cranked Handle
With Keylock



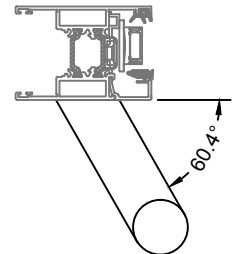
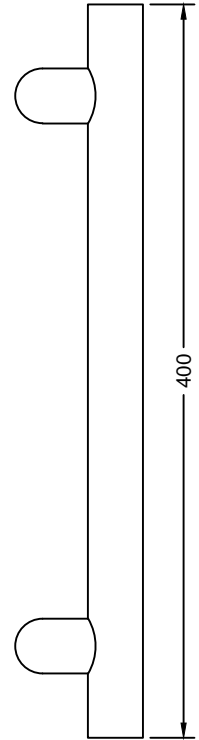
Snib Turn
(stainless Steel Finish Only)



Escutcheon
(stainless Steel Finish Only)

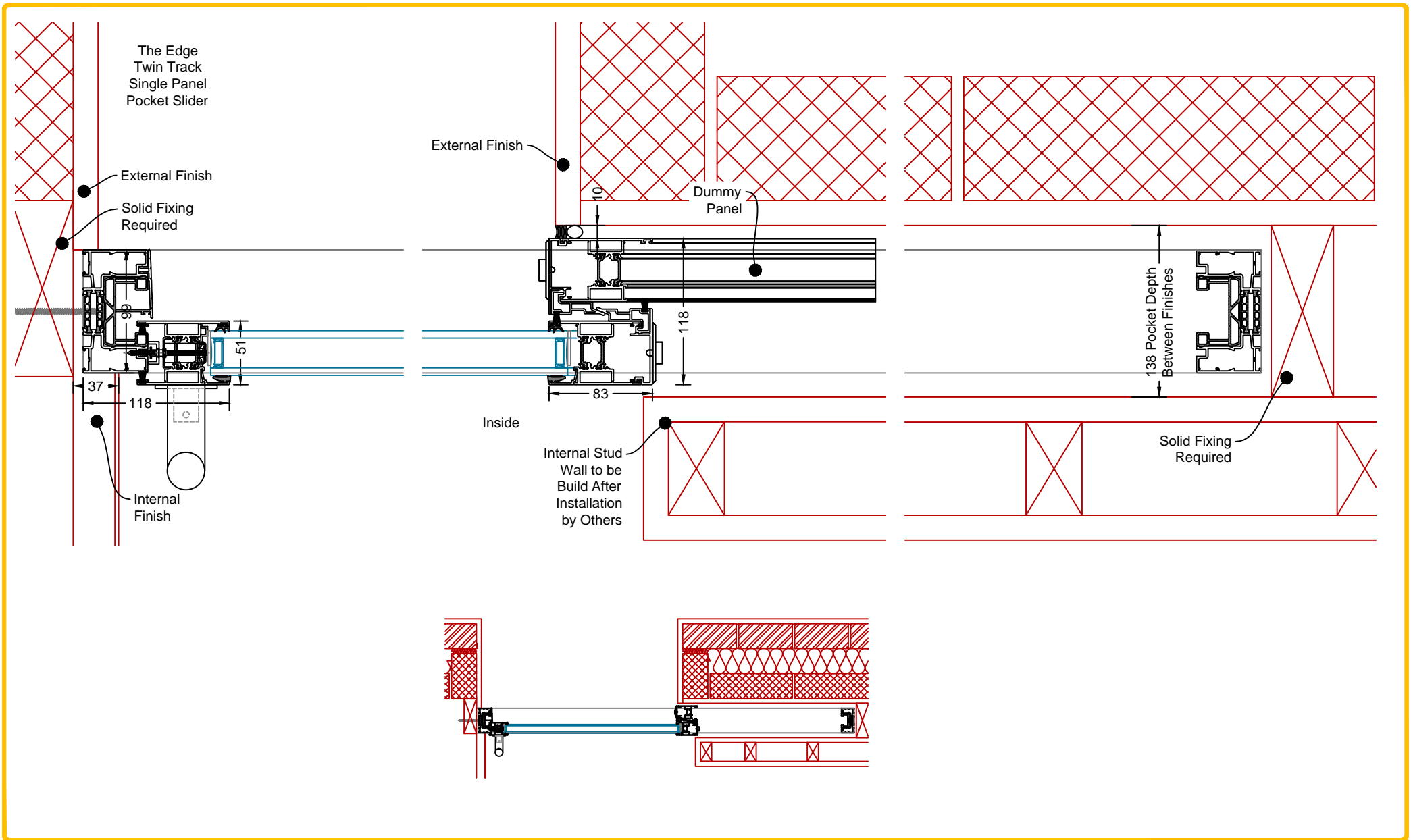


Cranked Handle
Without Keylock



SVG30/SVG83 (Twin Track)

POCKET SLIDER TYPICAL SECTIONS



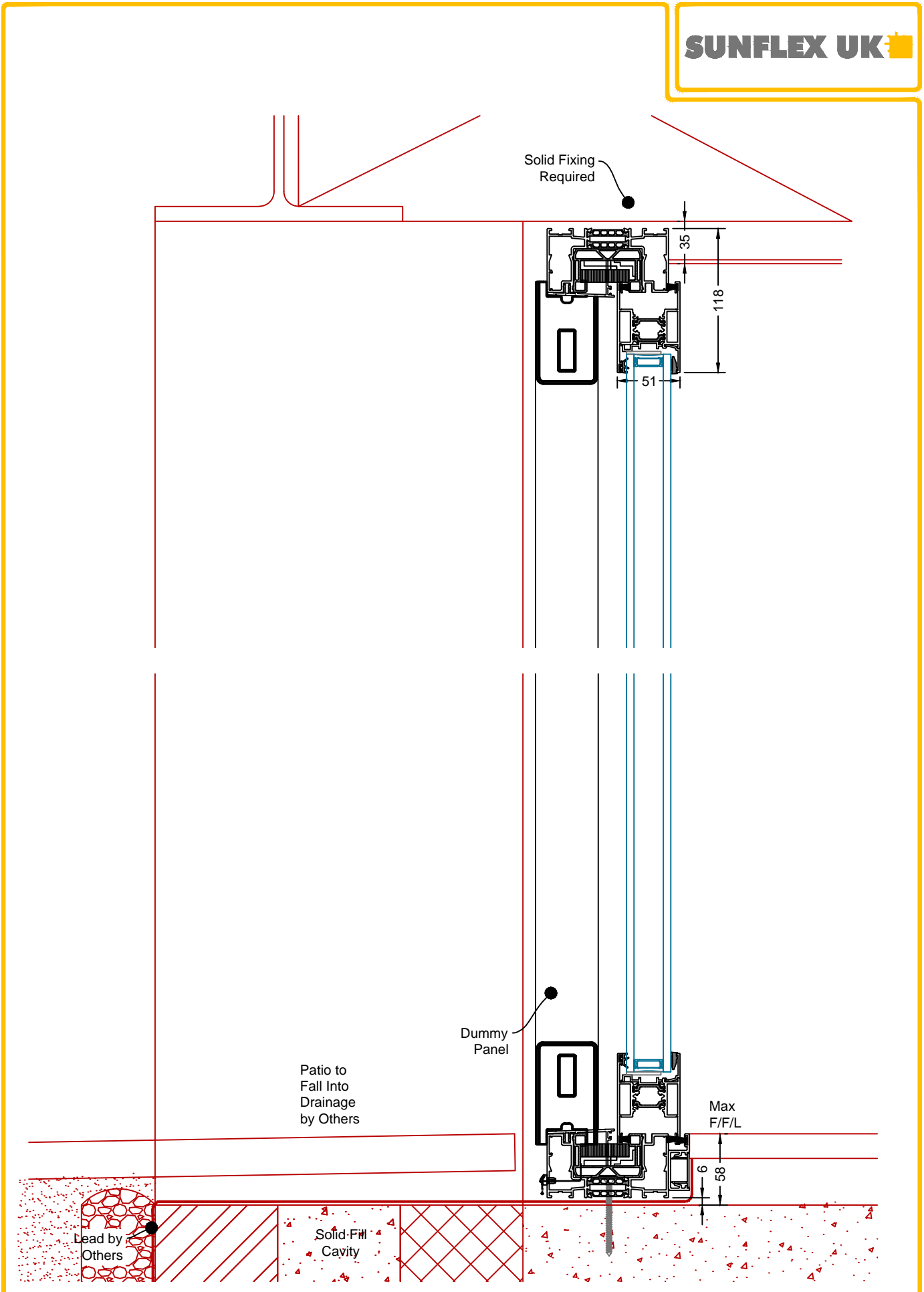
Description: SVG30/SVG83 Twin Track Single Panel Pocket Typical Detail

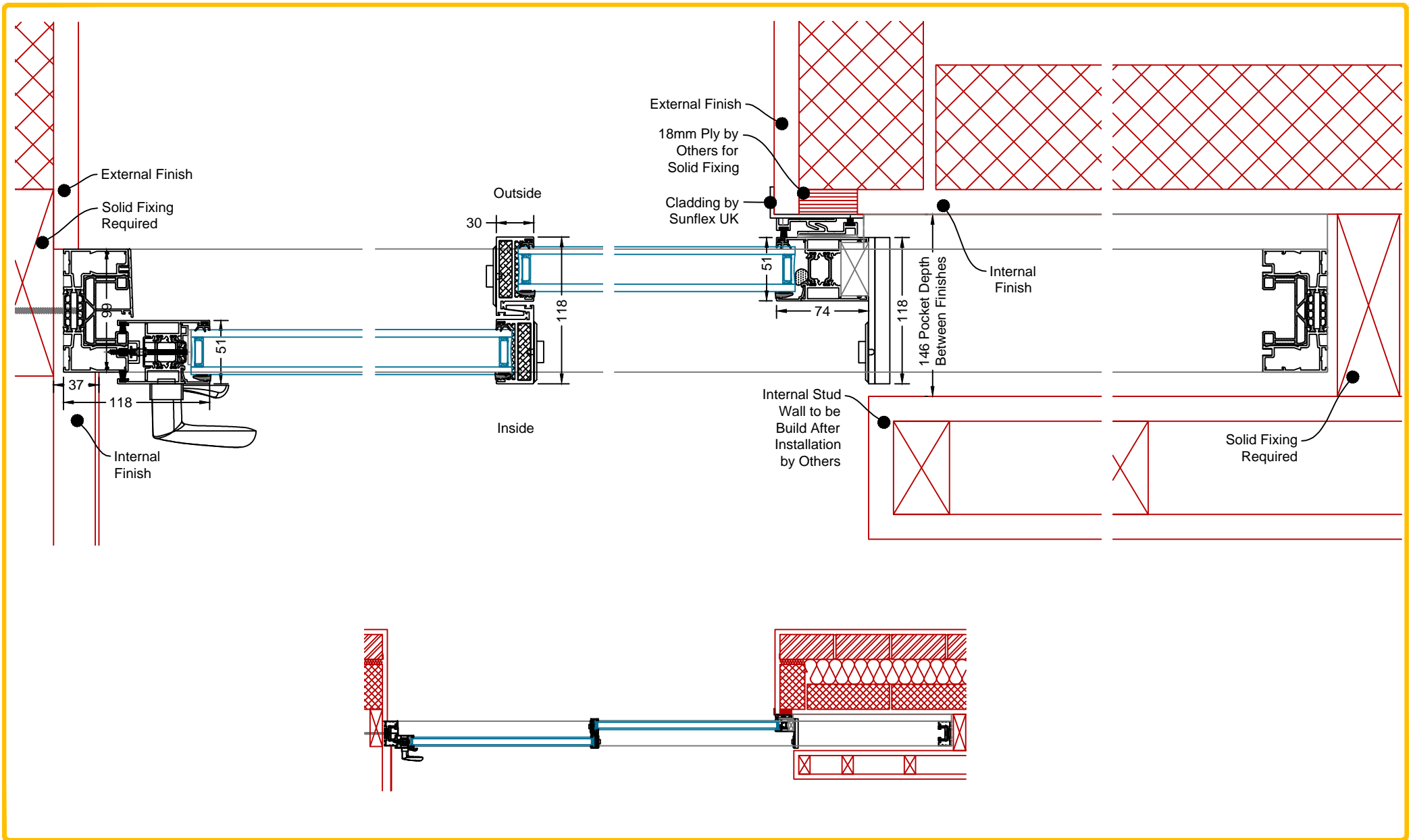
System: SVG30 & SVG83

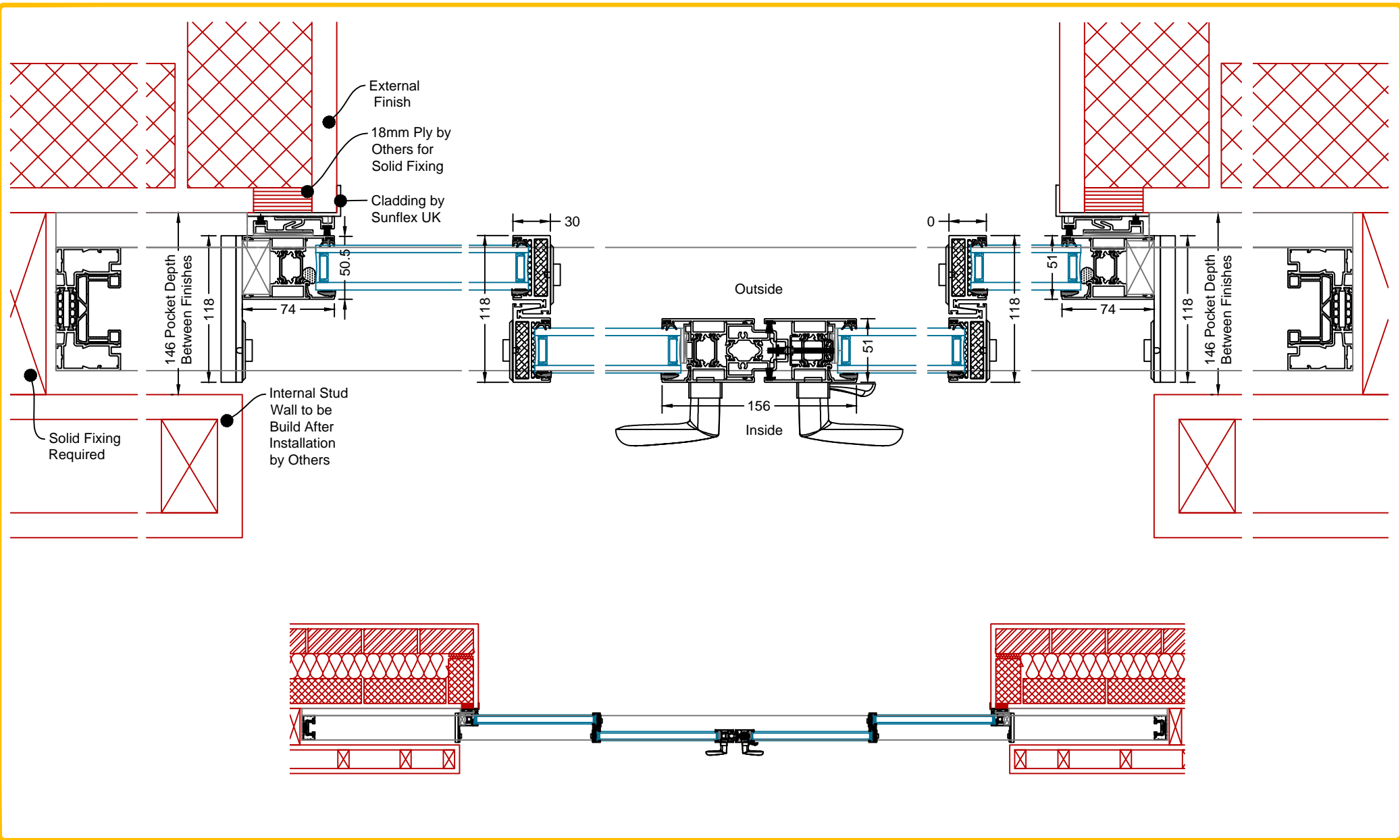
Rev.

Page: C02

A



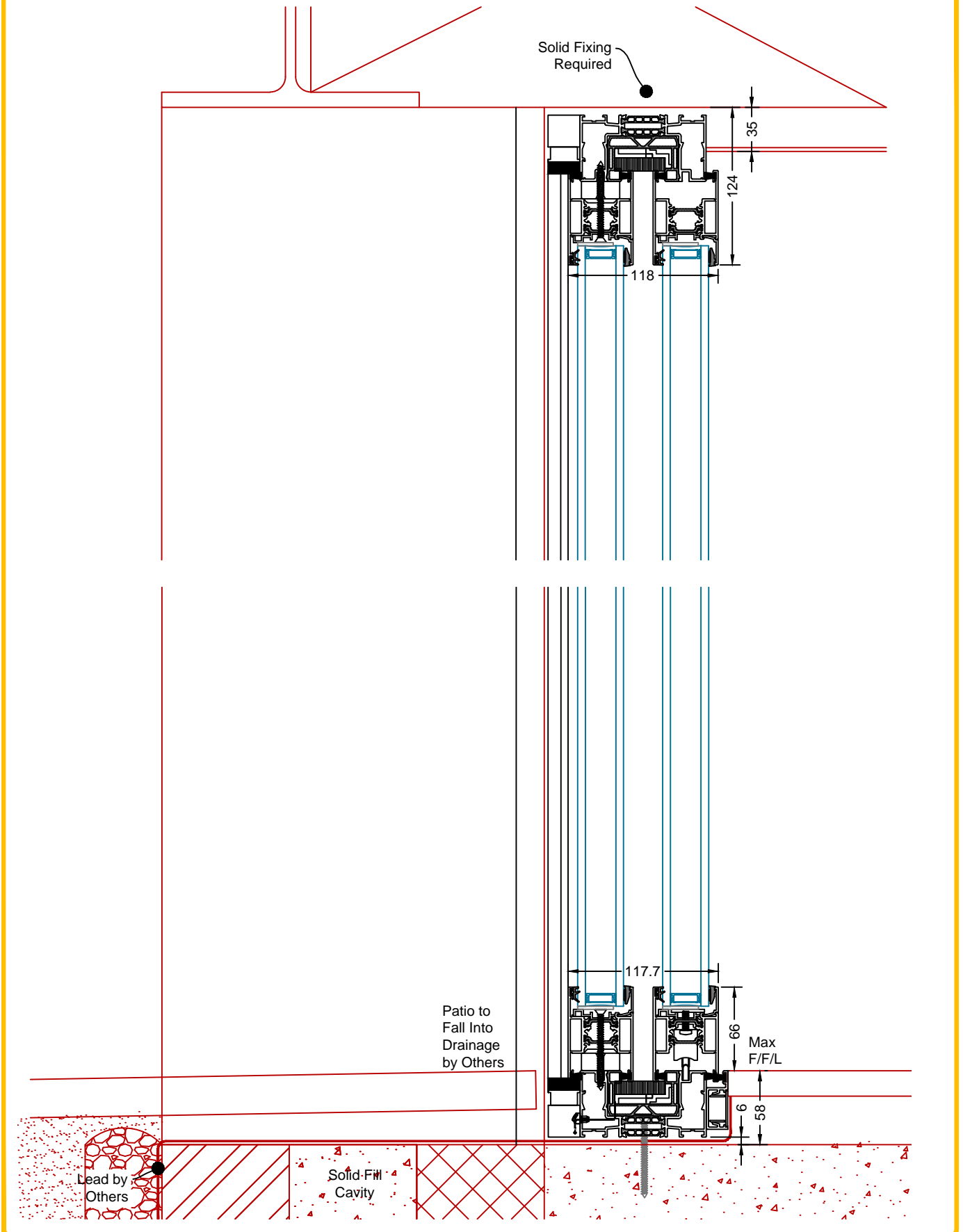




Description: SVG30/SVG83 Twin Track Four Panel Pocket Typical Detail

System: SVG30 & SVG83
Page: C05

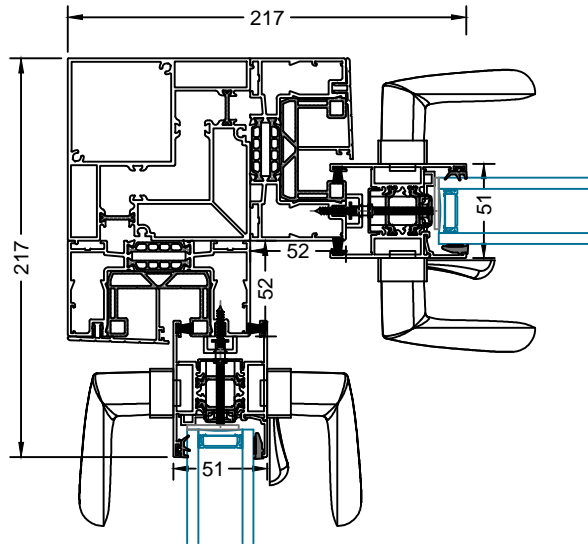
Rev. A



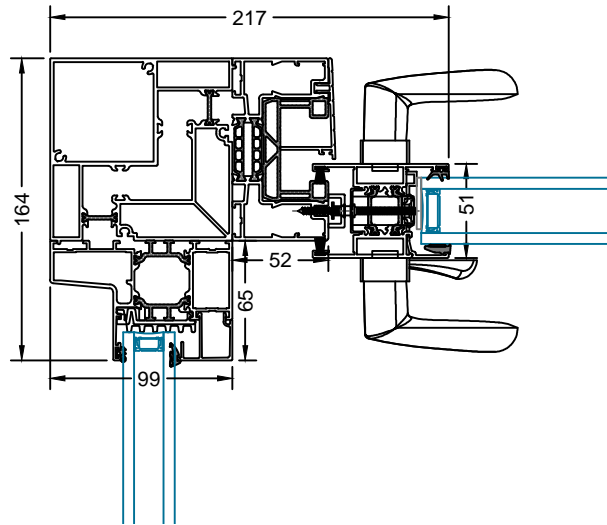
SVG30/SVG83 (Twin Track)

COUPLING DETAILS

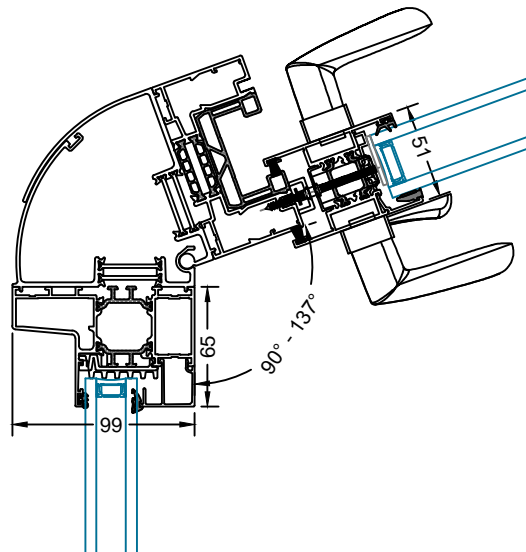
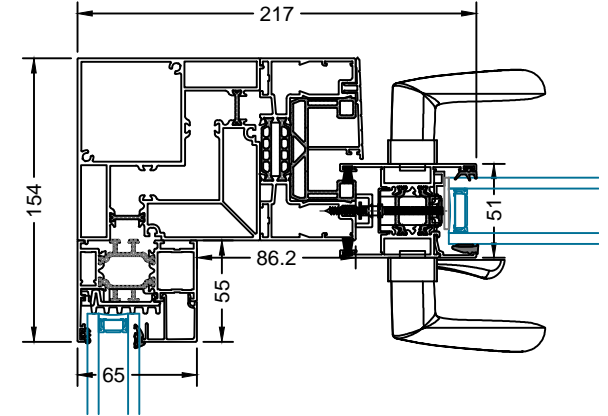
Twin Track
Fixed Corner Post



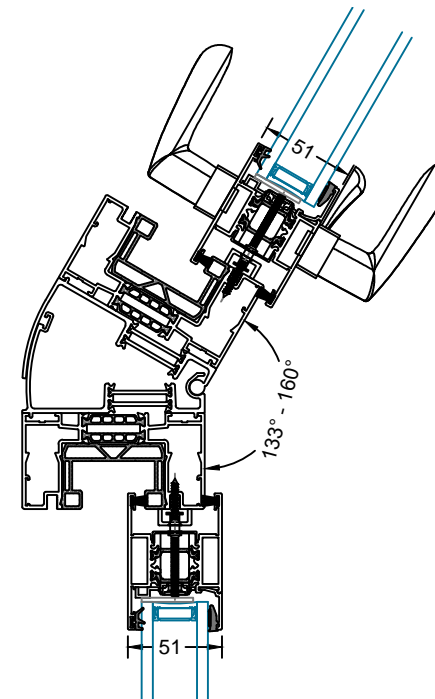
Twin Track
and SEF99
Fixed Corner Post

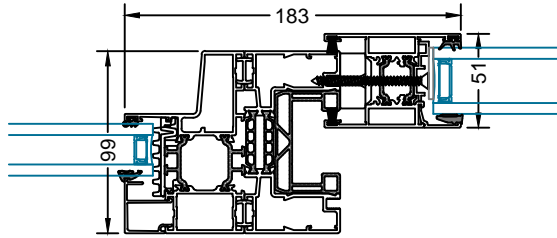


Twin Track
And SEF65
Fixed Corner Post

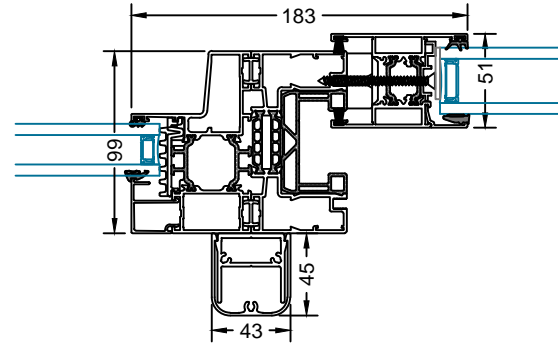


Note: SUNFLEX
Corner Posts Are
NOT Designed to
Offer Support To
The Building
Structure

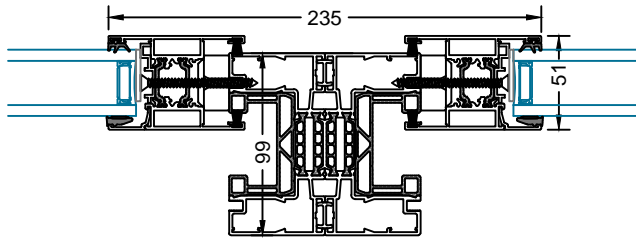




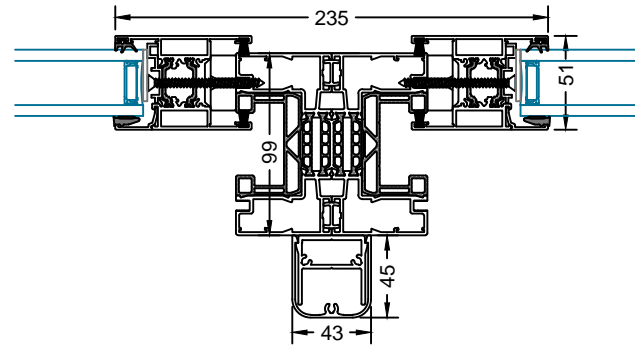
Fixed Frame/Slider
Standard



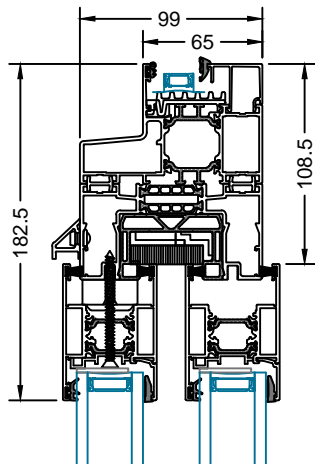
Fixed Frame/Slider
Heavy Duty



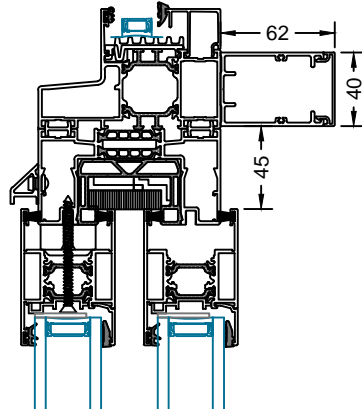
Slider/Slider
Standard



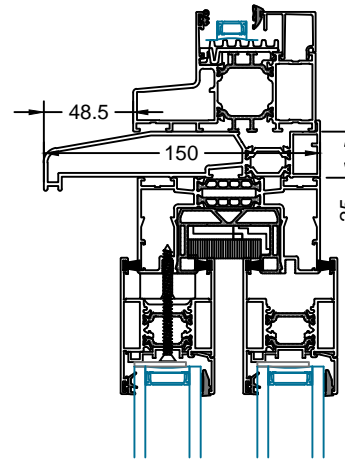
Slider/Slider
Heavy Duty



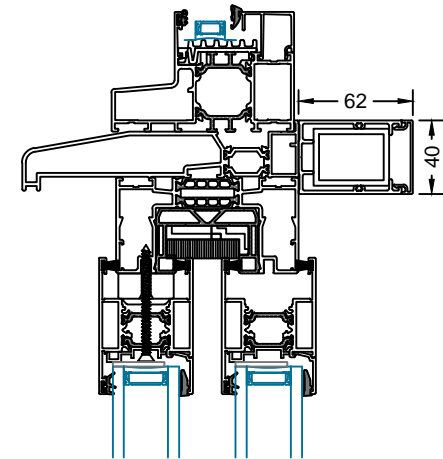
Standard



Heavy Duty



Heavy Duty For More Exposed Locations

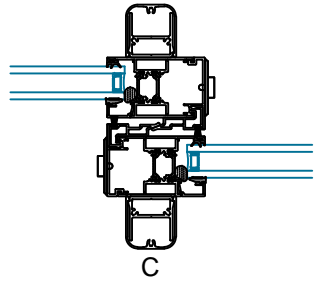


Heavy Duty For Extra Wide Openings

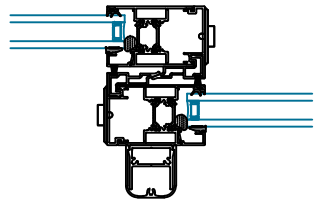
For Profile Limitations,
See Section E

SVG30/SVG83 (Twin Track)

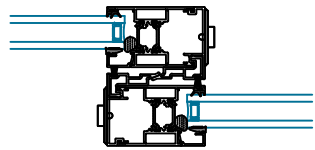
STATICS



C



B

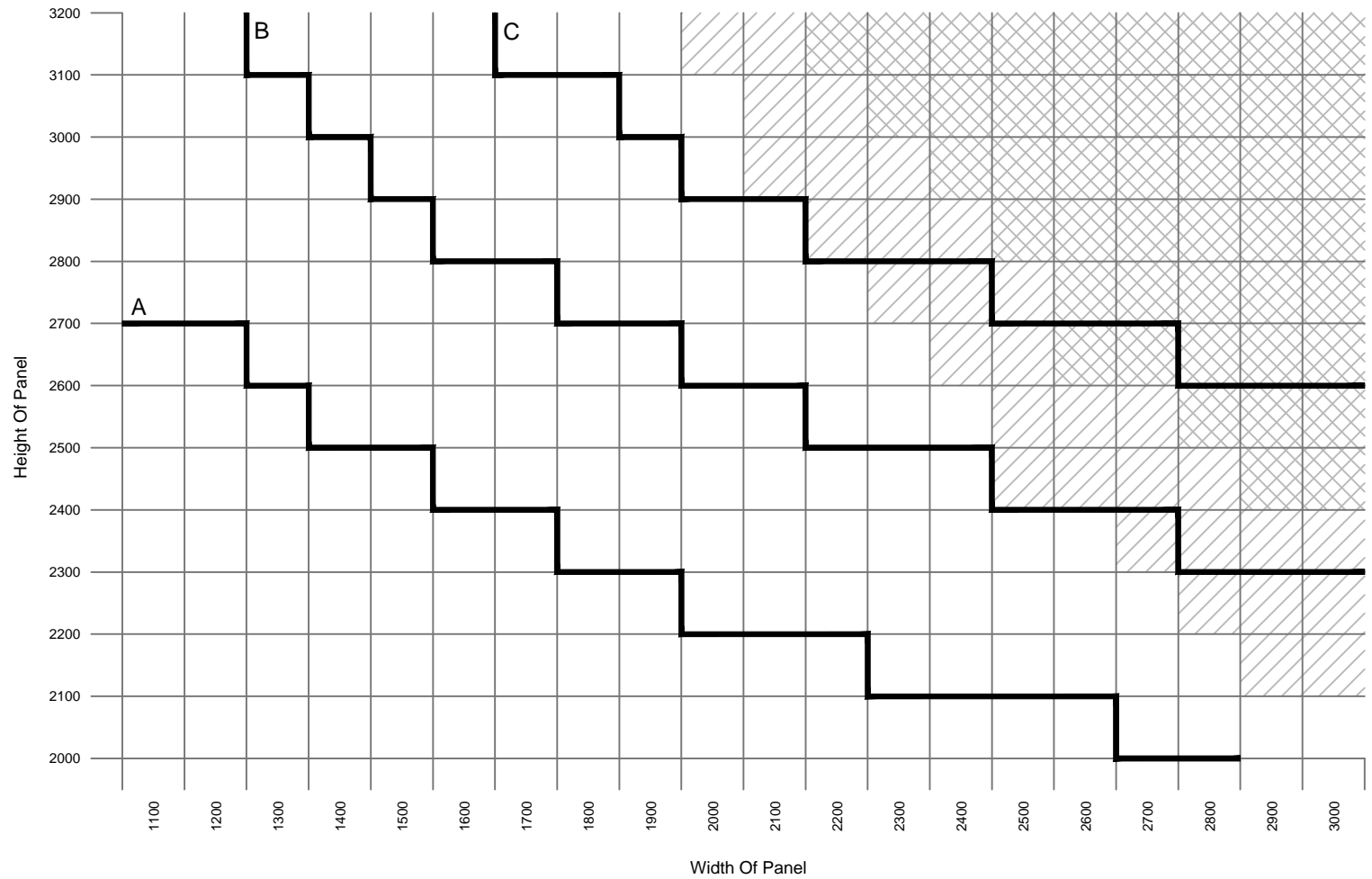


A

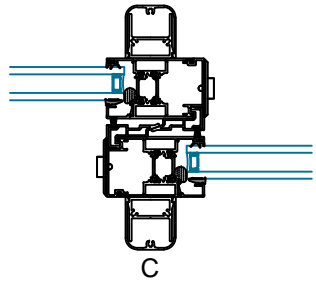
Panel Weight 250-350kg*
Reinforced Track & No Guarantee

350kg+* Not Recommended
No Guarantee

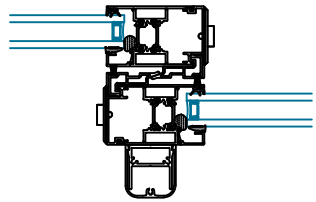
* Weights based on minimum recommended glass thickness



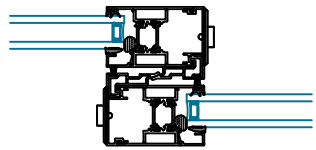
Sheltered Location 750Pa
(eg Central London Ground Floor)



C



B

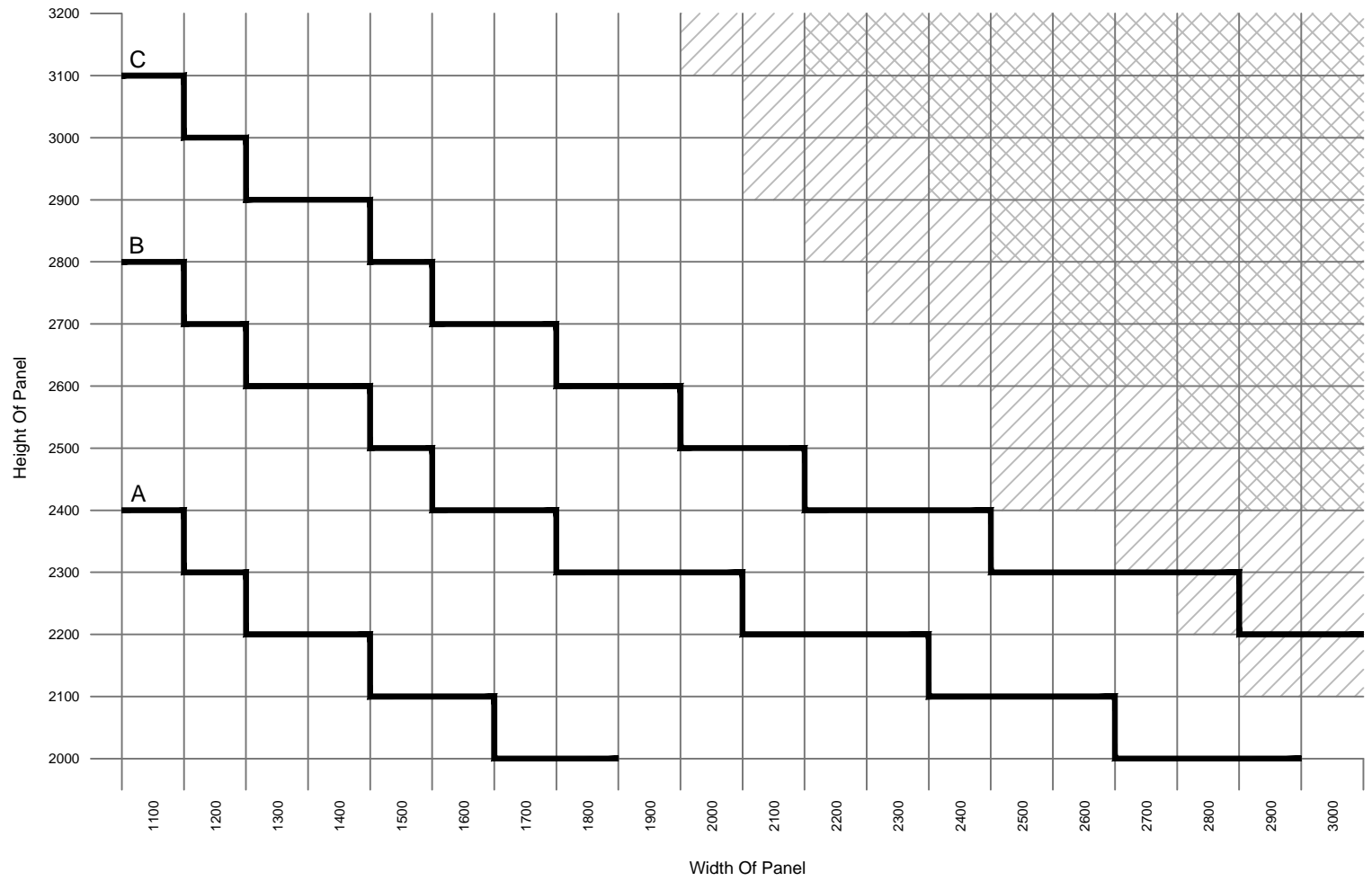


A

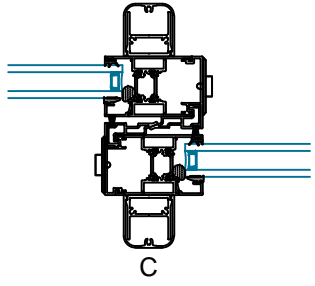
Panel Weight 250-350kg*
Reinforced Track & No Guarantee

350kg+* Not Recommended
No Guarantee

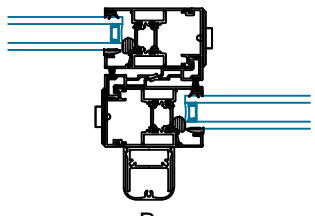
* Weights based on minimum recommended glass thickness



Rural Location 1200Pa
(eg North Yorkshire)



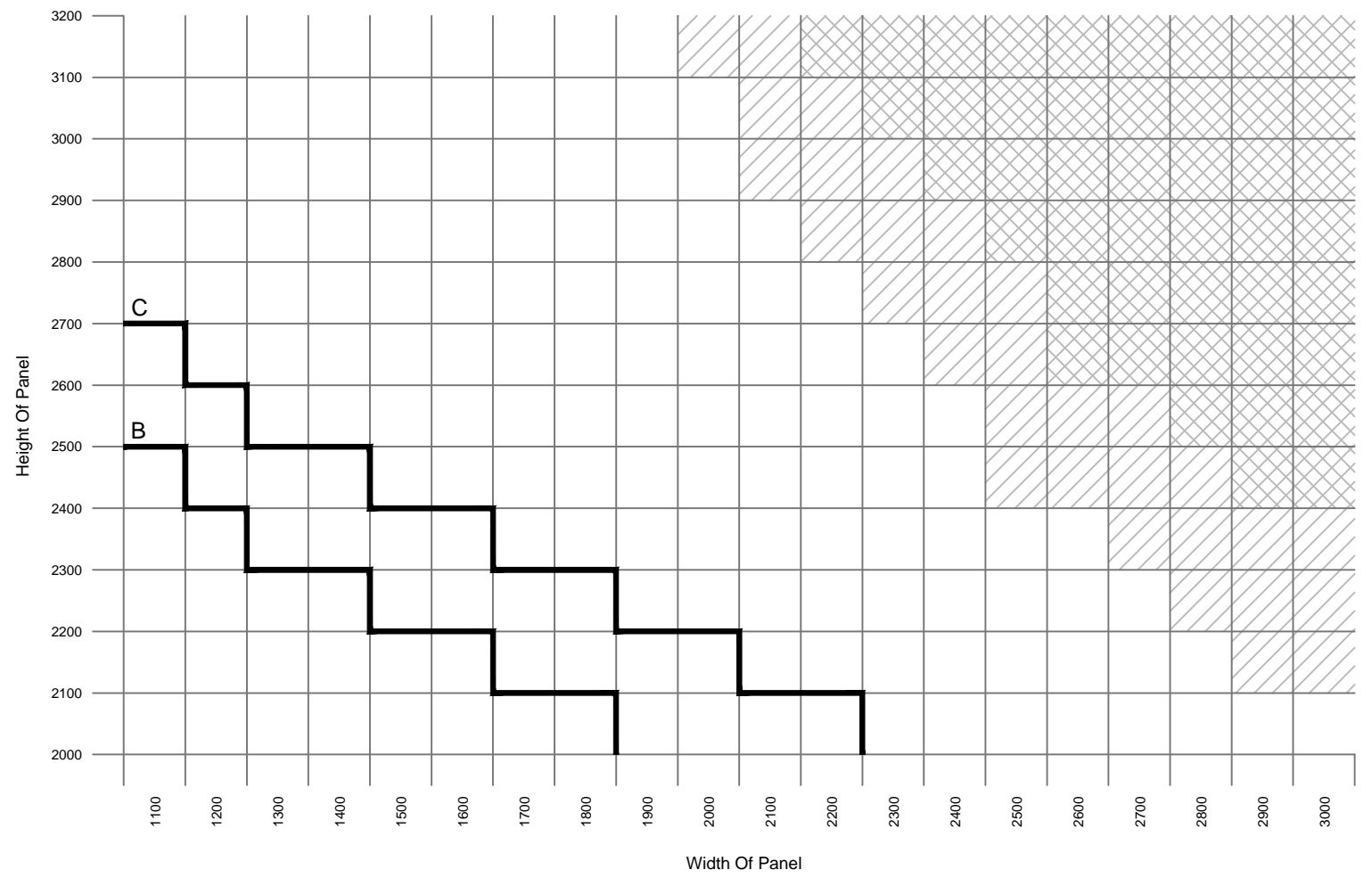
C



B

-  Panel Weight 250-350kg*
Reinforced Track & No Guarantee
-  350kg+* Not Recommended
No Guarantee

* Weights based on minimum recommended glass thickness



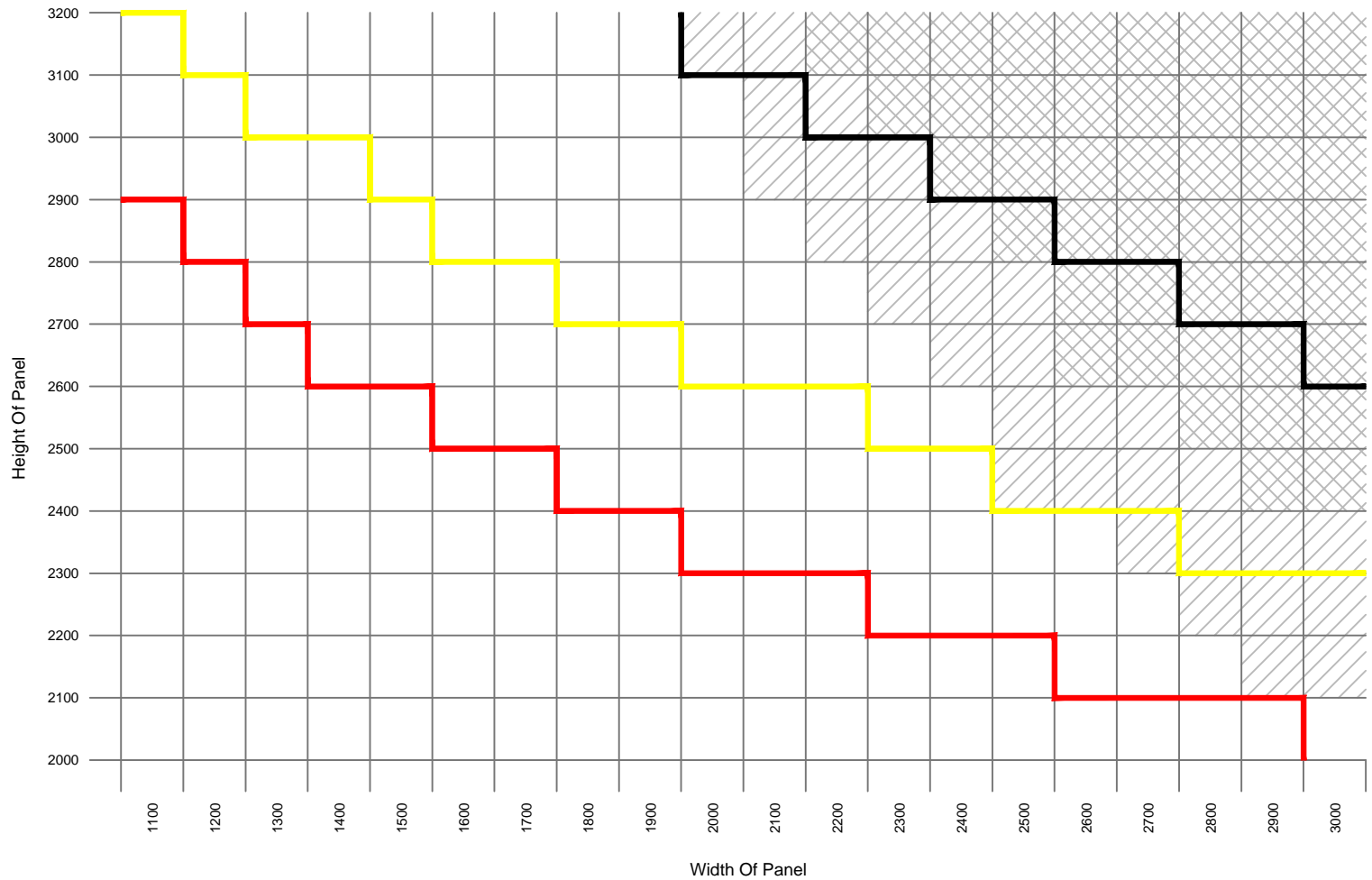
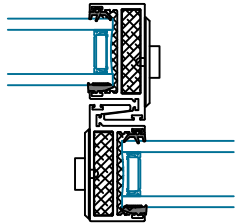
Fully Exposed Location 1700Pa
(eg Rural South Coast)



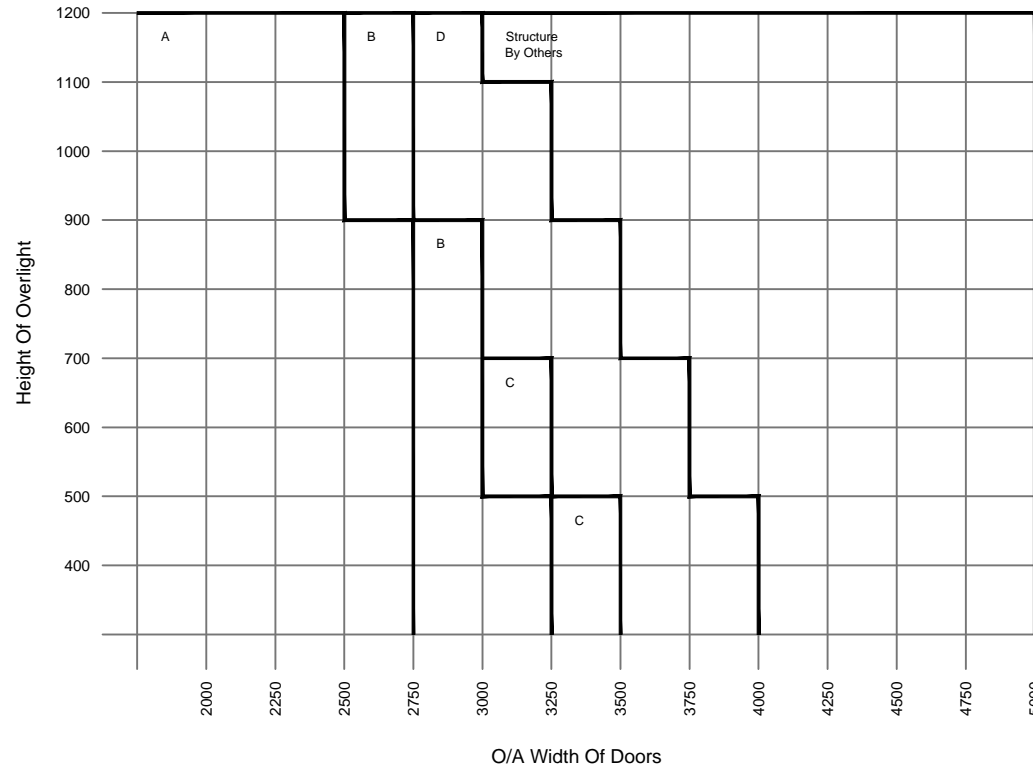
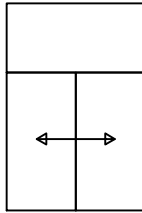
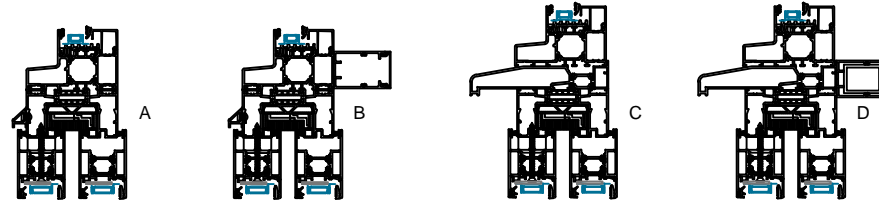
Description: SVG83 Maximum Panel Heights (Fully Exposed)

System: SVG30 & SVG83
Page: E04

Rev. A



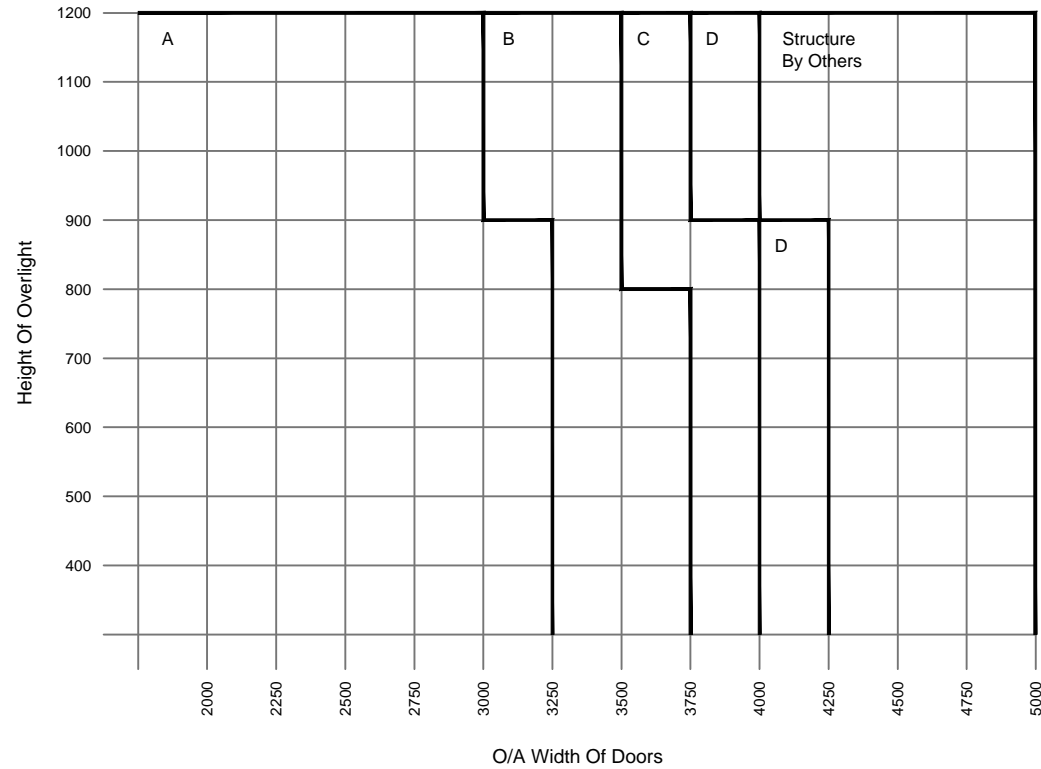
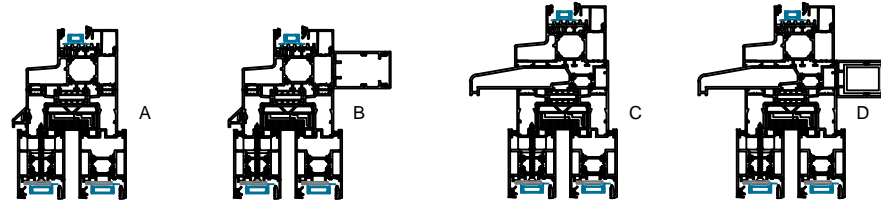
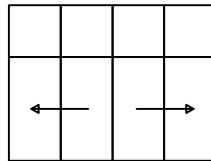
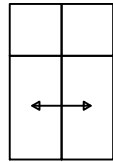
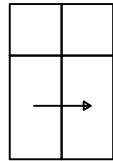
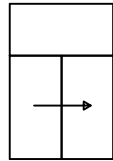
- Max. Panel Size @ 750pa
- Max. Panel Size @ 1200pa
- Max. Panel Size @ 1700pa
- Panel Weight 250-350kg
Reinforced Track & No Guarantee
- 350kg+ Not Recommended
No Guarantee



NOTE All calculations assume the following;
 Doors at maximum of 2500mm high.
 Glass in overlights to be maximum 6mm inner and outer panes.
 Openings assumed to be a ground level and not requiring to meet Part K for barrier loading.

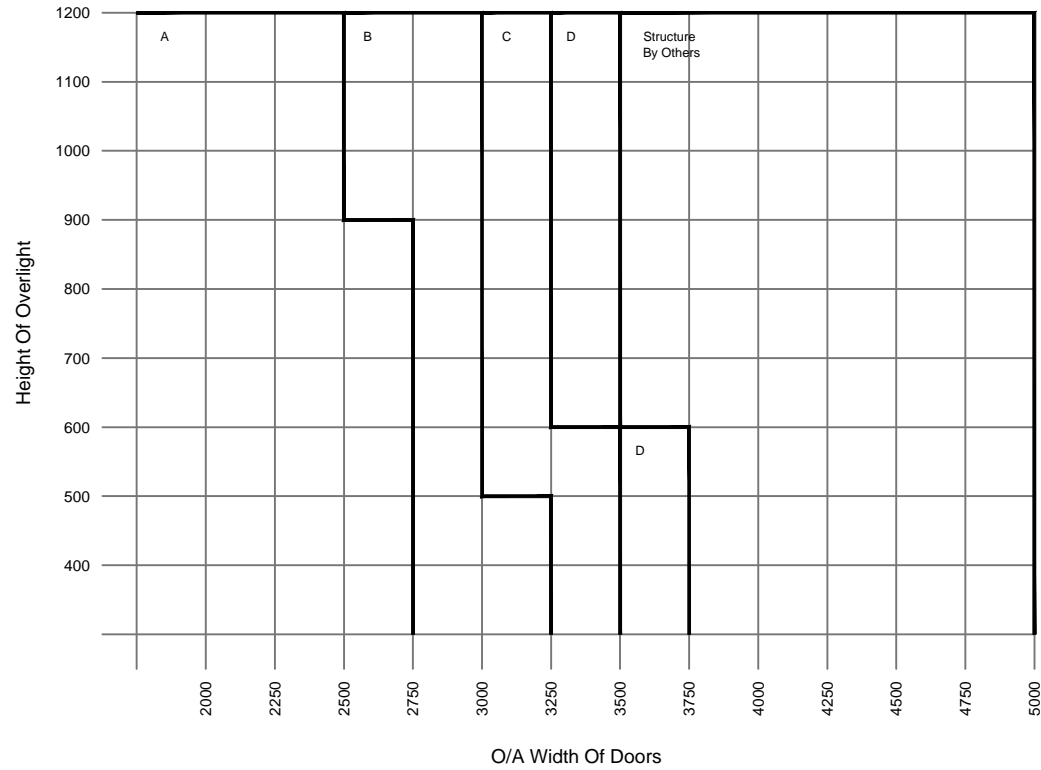
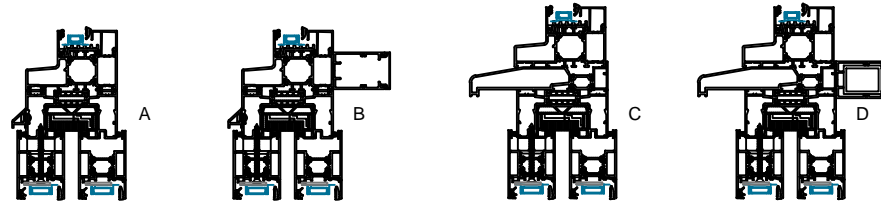
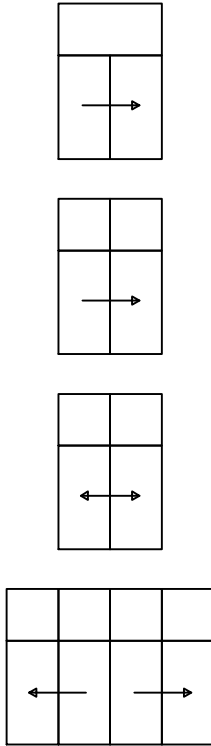
If customers design falls outside parameters shown it may still be possible but will need to be confirmed by the Design Office.

Rural Location 1200Pa
 (eg North Yorkshire)



NOTE All calculations assume the following;
 Doors at maximum of 2500mm high.
 Glass in overlights to be maximum 6mm inner and outer panes.
 Openings assumed to be a ground level and not requiring to meet Part K for barrier loading.

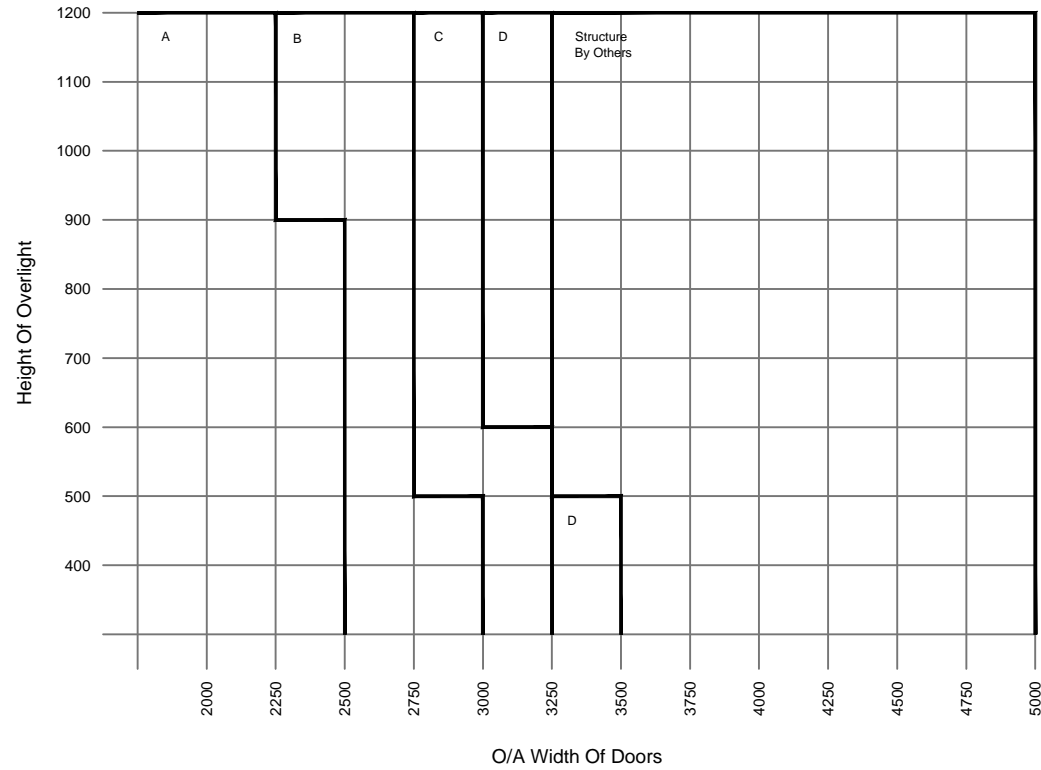
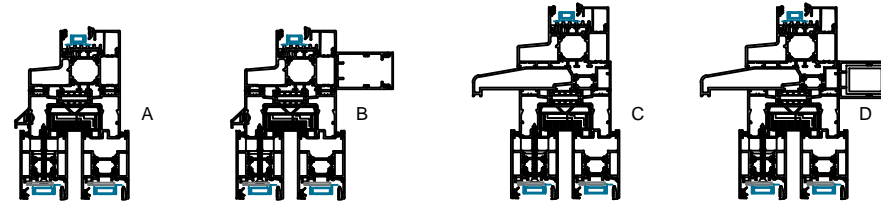
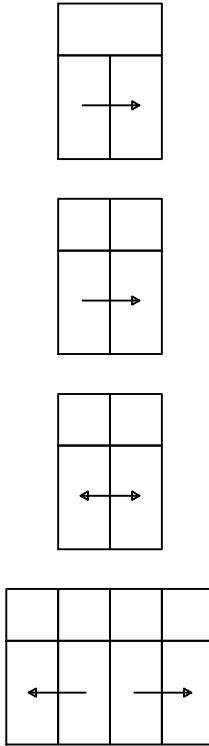
If customers design falls outside parameters shown it may still be possible but will need to be confirmed by the Design Office.



Rural Location 1200Pa
(eg North Yorkshire)

NOTE All calculations assume the following:
 Doors at maximum of 2500mm high.
 Glass in overlights to be maximum 6mm inner and outer panes.
 Openings assumed to be a ground level and not requiring to meet Part K for barrier loading.

If customers design falls outside parameters shown it may still be possible but will need to be confirmed by the Design Office.



Fully Exposed Location 1700Pa
(eg Rural South Coast)

NOTE All calculations assume the following;
 Doors at maximum of 2500mm high.
 Glass in overlights to be maximum 6mm inner and outer panes.
 Openings assumed to be a ground level and not requiring to meet Part K for barrier loading.

If customers design falls outside parameters shown it may still be possible but will need to be confirmed by the Design Office.